

AMATHOS
RESIDENCES

LIMASSOL

THE CITY OF CHOICE

Limassol is Cyprus' cosmopolitan capital, its most important business district and a vibrant modern playground. It is consistently ranked as one of the world's leading cities for quality of life.





Nowhere in Cyprus is there a richer mix of modern culture and fascinating heritage.





Traditional Limassol



Away from the tourist areas, the Limassol countryside has a diverse wealth of its own with traditional villages, vineyards and wineries, monasteries, remote forests.

Limassol Promenade



Limassol's enchanting promenade is situated on the prime seafront boulevard. It is the ideal place for walking, jogging, spending time on the beach or taking time for peaceful contemplation under the shade of a mature palm tree.

Vibrant Limassol

The city offers an active, vibrant and varied choice of restaurants, stylish cafes, bars and chic lounges.





Adventure in Taste

Limassol's gastronomic scene comprises a delicious mix of fine and casual dining. It offers a great selection of cuisines as well as local traditional food.



Private Schools

There are a number of private schools (Greek, English, French, and Russian) available in Limassol.





Luxury Shopping

Limassol's shopping is refined. An abundance of global luxury brands serve the exquisite tastes of the town's stylish residents and visitors.





LEISURE

A year-round programme of major international events. Fine-art galleries, historic sites, museums and theatres.



ALIVE WITH HISTORY

It has a charming medieval quarter, beautiful Byzantine castle and attractive Colonial era architecture.



LIFESTYLE

Limassol is an important maritime centre, a popular cruise destination and a private yachting hub.



AMATHUS ARCHAEOLOGICAL SITE

Situated near the vicinity of Agios Tychon, the ruins of one of the biggest ancient kingdoms of the island lay here: Amathus, which was also a royal city. It derived its name from Amathusa, the mother of King Kinyras from Paphos.

AMATHOS

RESIDENCES



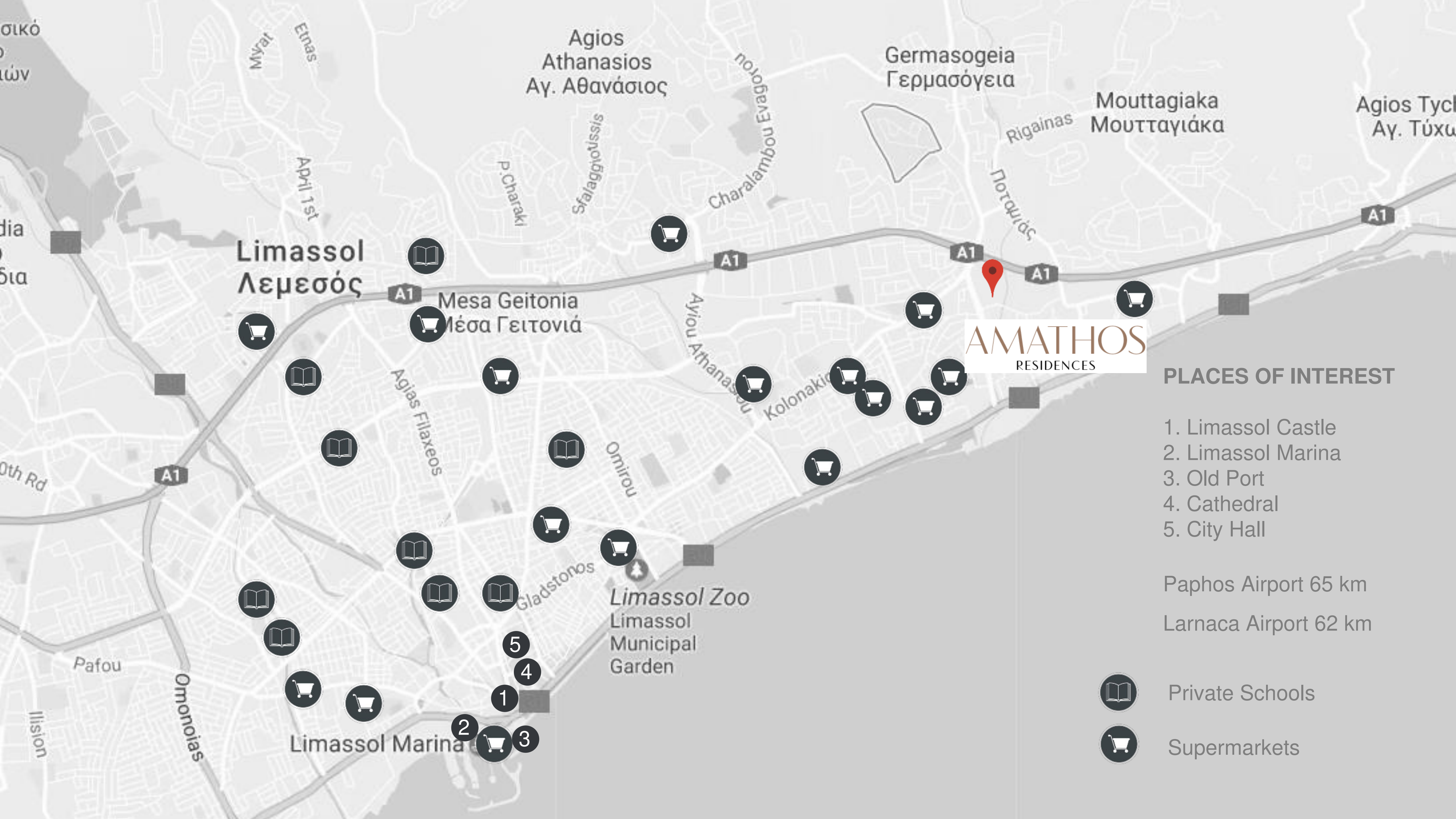
Amathos Residences is an elegant contemporary development in the cosmopolitan city of Limassol, just 500 metres from the beachfront and promenade.

Consisting of 1, 2 & 3 bedroom residences, this boutique development enjoys a prime address within walking distance to a vast array of amenities.



Comprising eleven luxuriously appointed properties, all with open-plan living areas that extend onto oversized terraces, Amathos Residences offers the perfect Mediterranean home.







AMATHOS
RESIDENCES

PLACES OF INTEREST

- 1. Limassol Castle
- 2. Limassol Marina
- 3. Old Port
- 4. Cathedral
- 5. City Hall

Paphos Airport 65 km
 Larnaca Airport 62 km

-  Private Schools
-  Supermarkets

Limassol
Λεμεσός

Agios Athanasios
Αγ. Αθανάσιος

Germasogeia
Γερμασόγεια

Mouttagiaka
Μουτταγιάκα

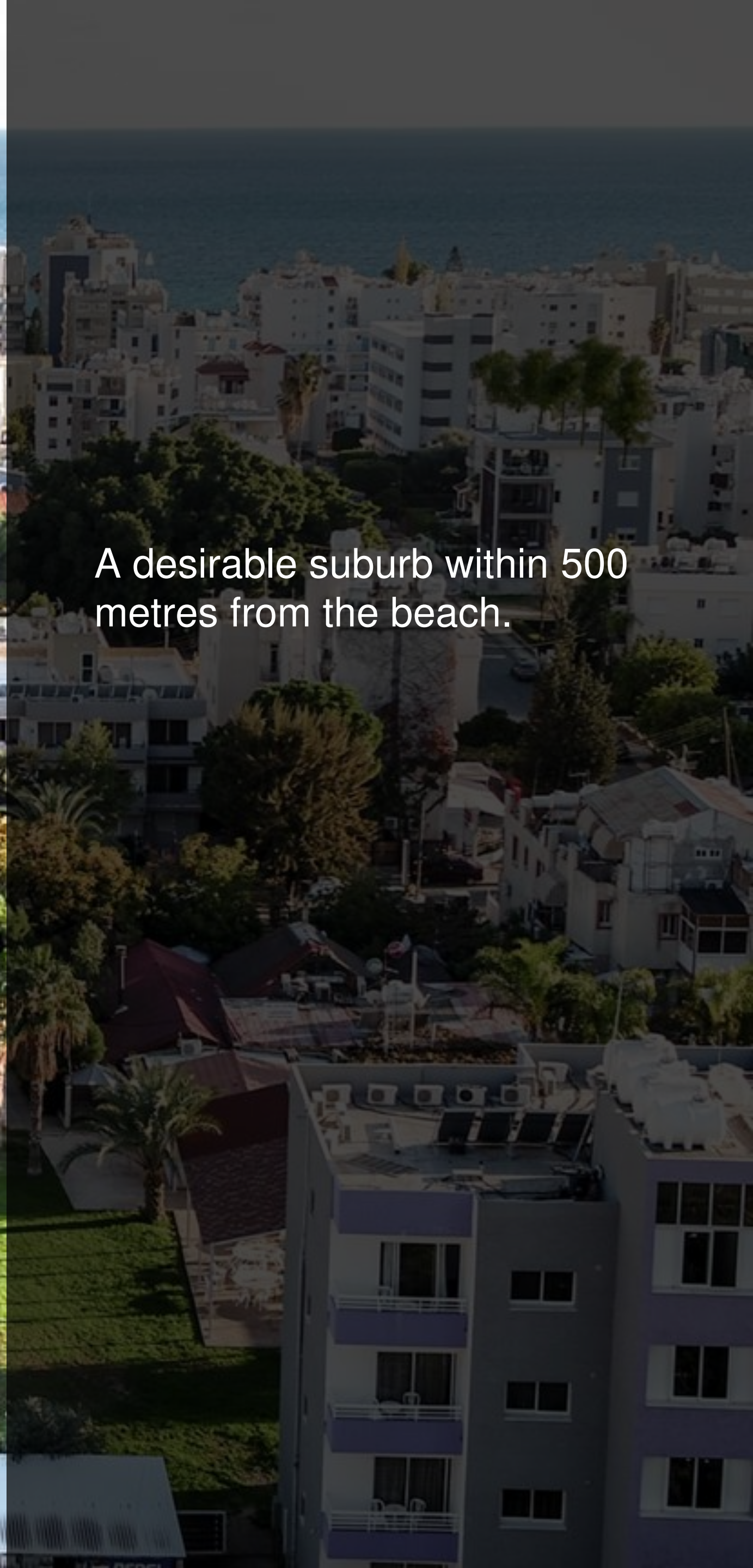
Agios Tychon
Αγ. Τύχων

Mesa Geitonia
Μέσα Γειτονιά

Limassol Zoo
Limassol
Municipal
Garden

Limassol Marina

- 5
- 4
- 1
- 2
- 3



A desirable suburb within 500 metres from the beach.

AMENITIES

AMENITIES NEAR AMATHOS RESIDENCES



Bakery 900m



Supermarket 2.1km



Private English School 4.9km



Private Hospital 5.9km



Pharmacy 900m



Bank 500m



Sandy beach 1.2km

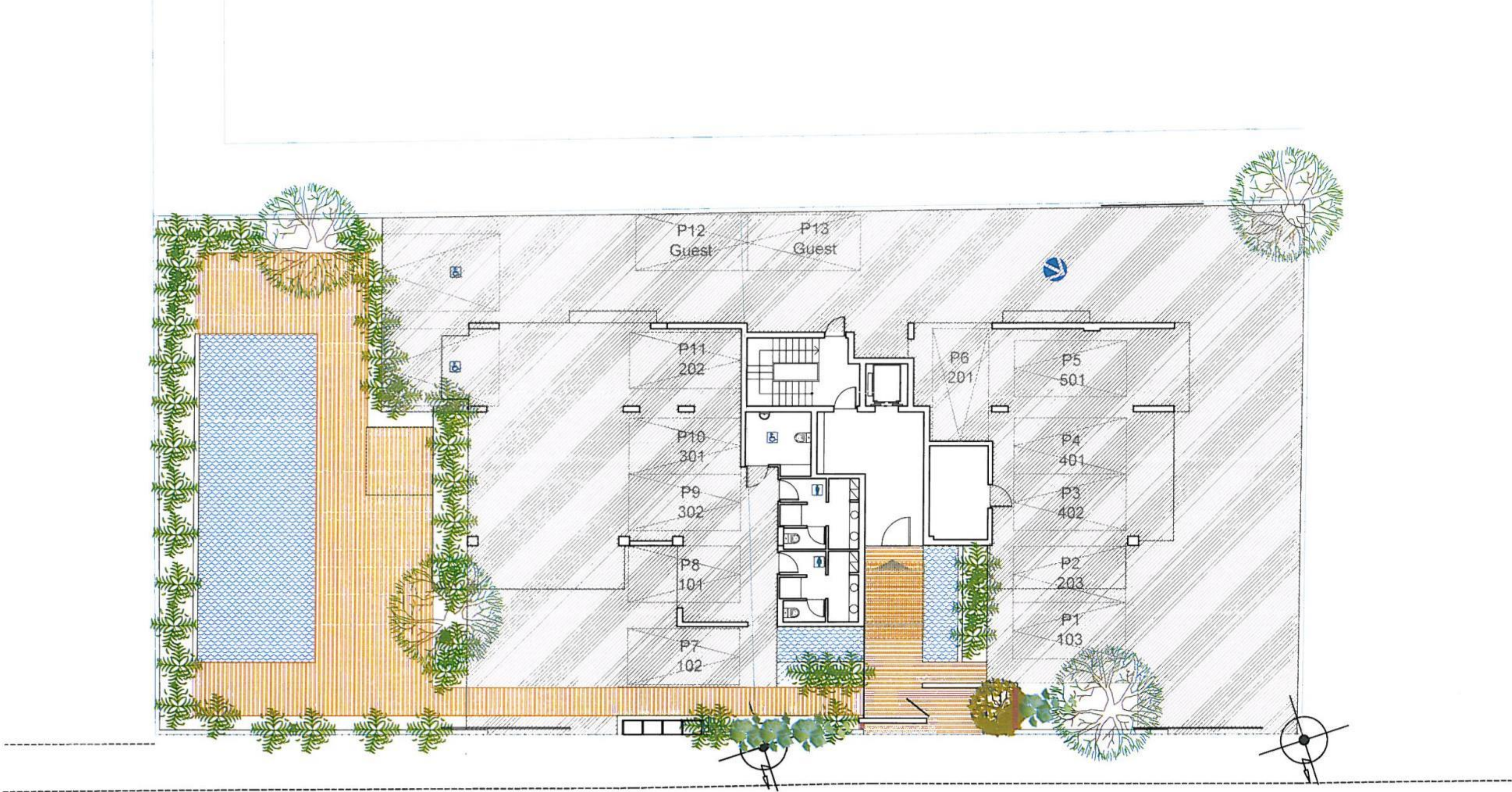


Tavern 10m

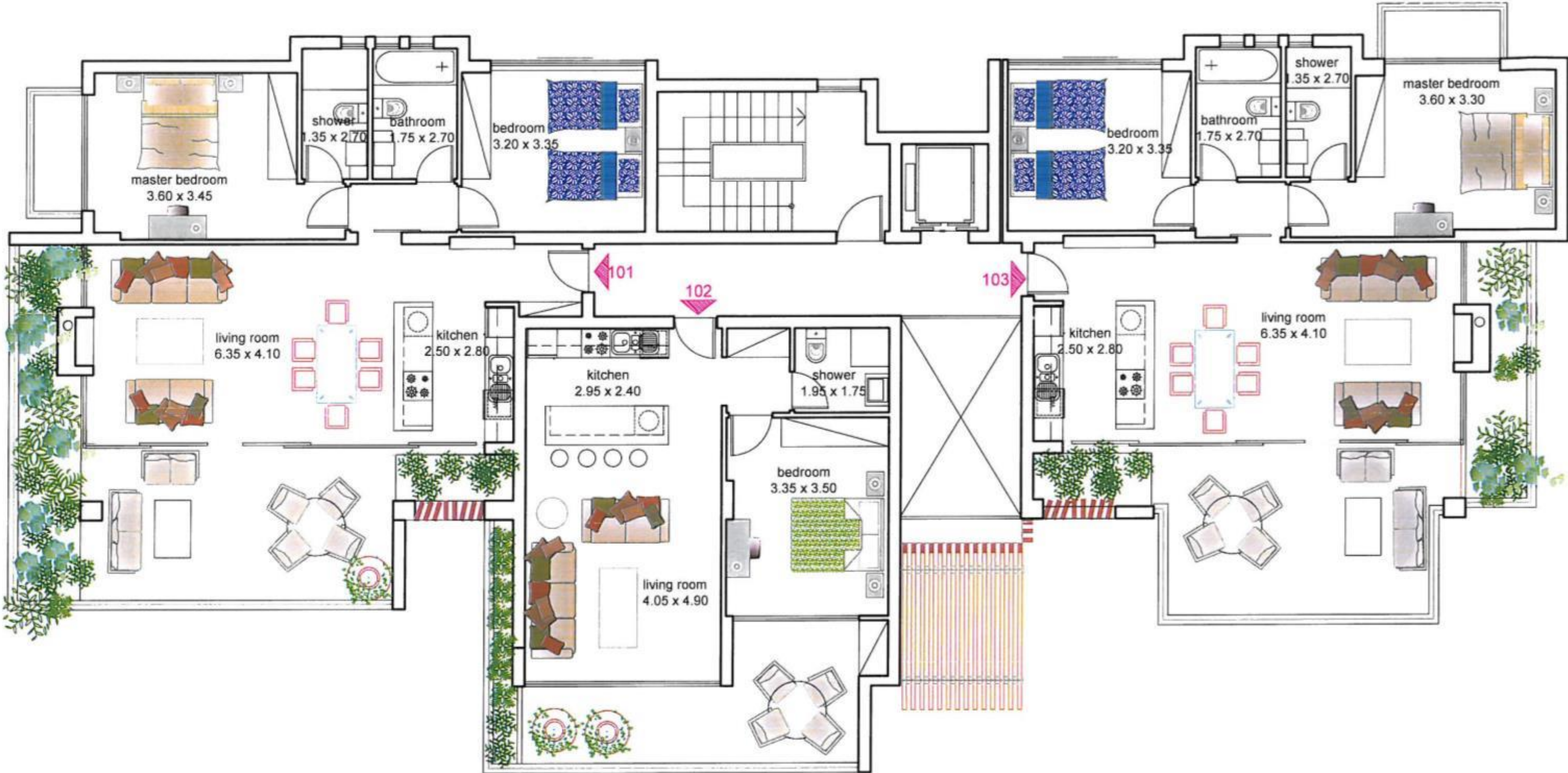




SITE PLAN



FIRST FLOOR PLANS









SECOND FLOOR PLANS

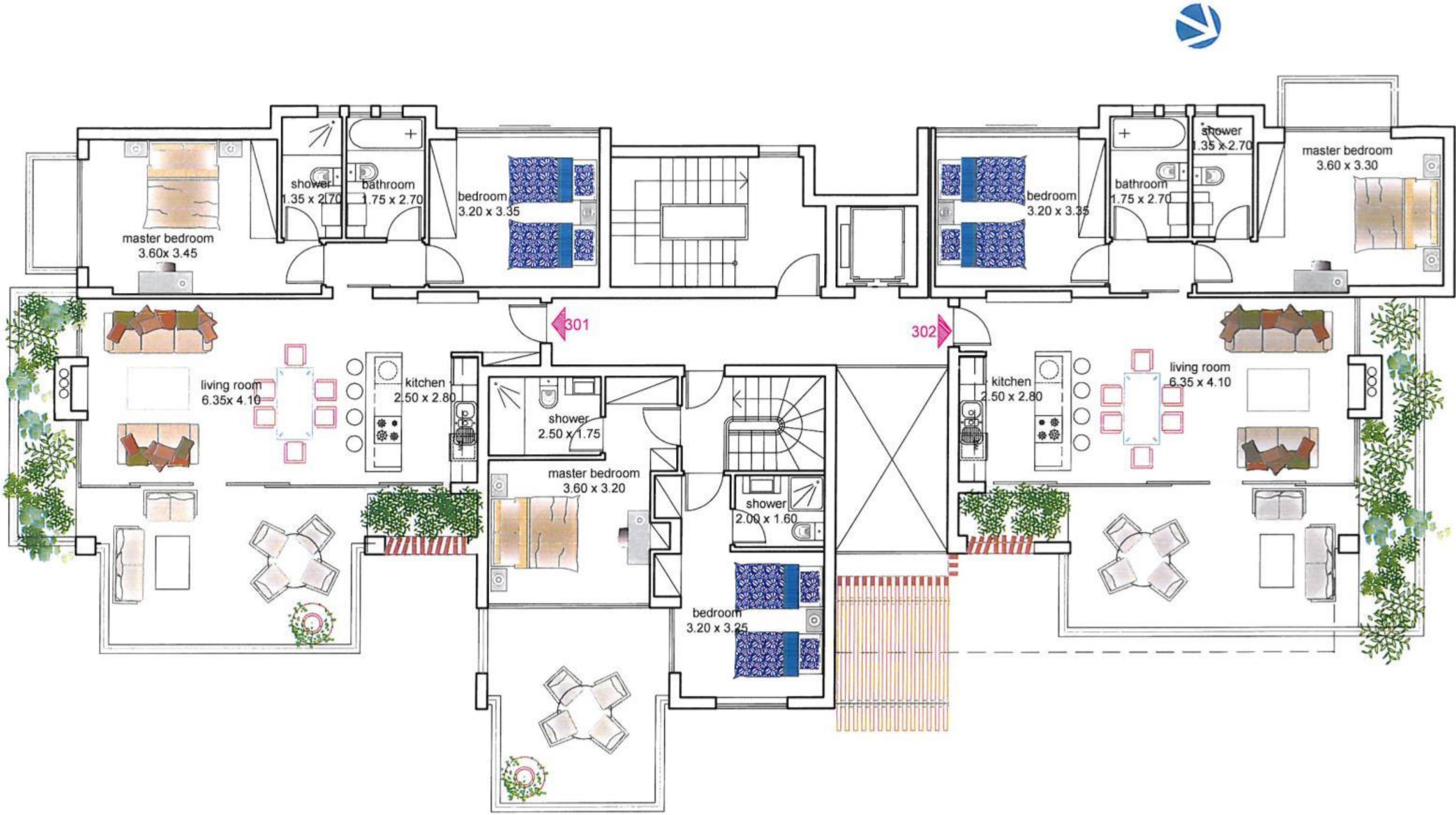








THIRD FLOOR PLANS

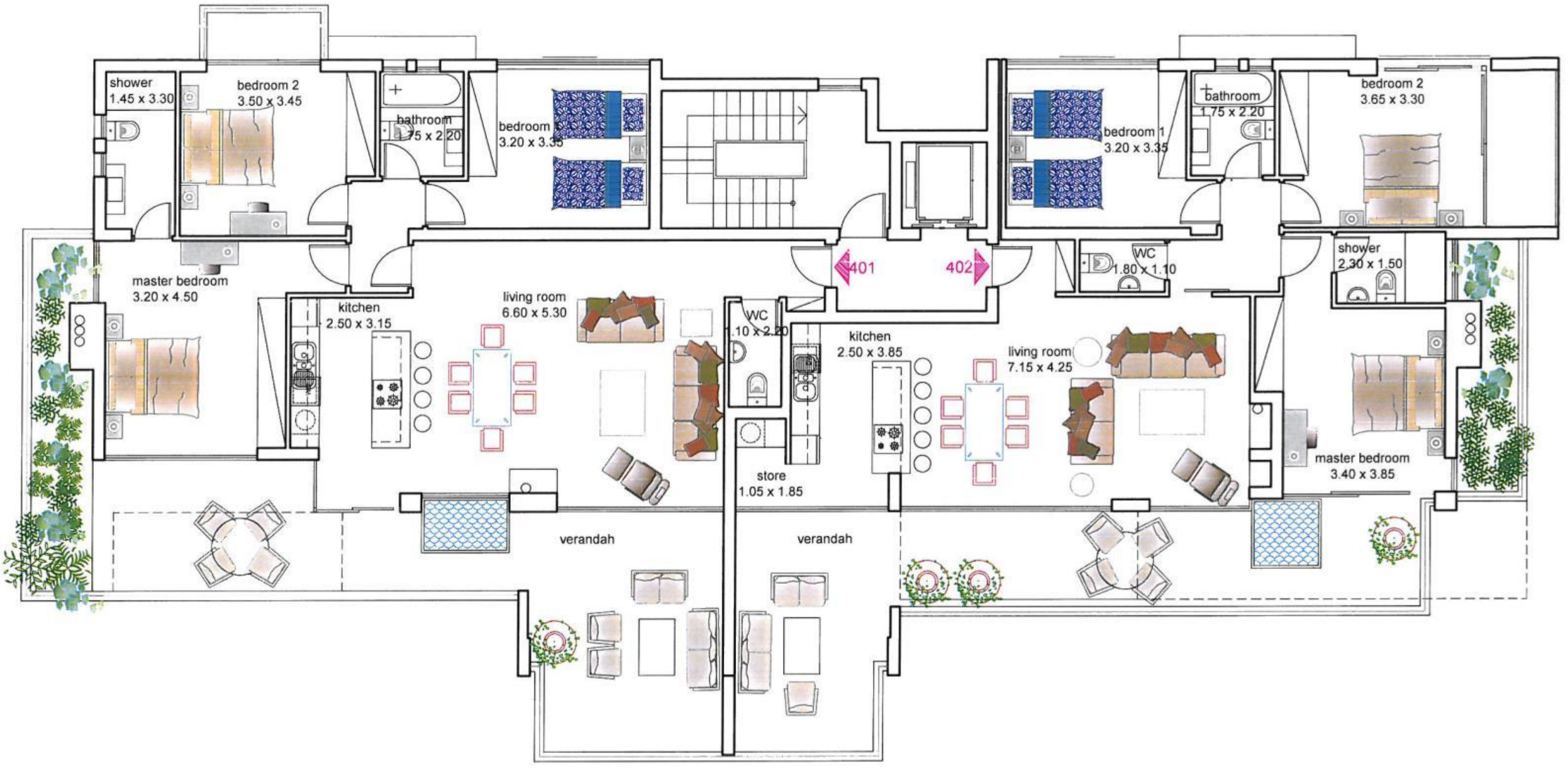








FOURTH FLOOR PLANS



The airy properties are finished in a cool contemporary palette that complements the sleek modern exterior and they enjoy great city and sea views.







FIFTH FLOOR PLANS













AMATHOS
RESIDENCES