

AMAYA

RESIDENCES



PAFOS

THE CITY OF BEAUTY

Pafos, a coastal city in the south west of Cyprus is the legendary birthplace of Aphrodite, the Goddess of love and beauty. Once the ancient capital of Cyprus, Pafos is Cyprus' most picturesque city and has been selected as the European Capital of Culture for 2017.



The City of Beauty



Pafos, with its charming harbour and medieval fort, offers cosmopolitan living, beautiful scenery and significant historical sites. It was the capital of Cyprus for 600 years in ancient times and its archaeological legacy is such that UNESCO put the whole town on its World Cultural Heritage list.



UNESCO World Heritage Site

The town of Pafos is of outstanding universal value and it is included in the official UNESCO list of cultural and natural treasures of the world heritage. These historical sites date back thousands of years and include ancient theatres and colorful mosaics, to impressive fortresses and underground tombs.



Pafos

Pafos' historic city charm is complemented by a vast array of stunning beaches, perhaps the best on the island, an excellent selection of stylish cafes and restaurants, modern amenities, a buzzing nightlife and many interesting attractions. It is also home to Cyprus' national park, the Akamas.

- Harbour Castle
- Petra tou Romiou
- Archaeological Park
- Mosaics
- Tombs of the Kings
- Coral Bay
- Akamas
- Kings Avenue Mall
- Traditional Villages

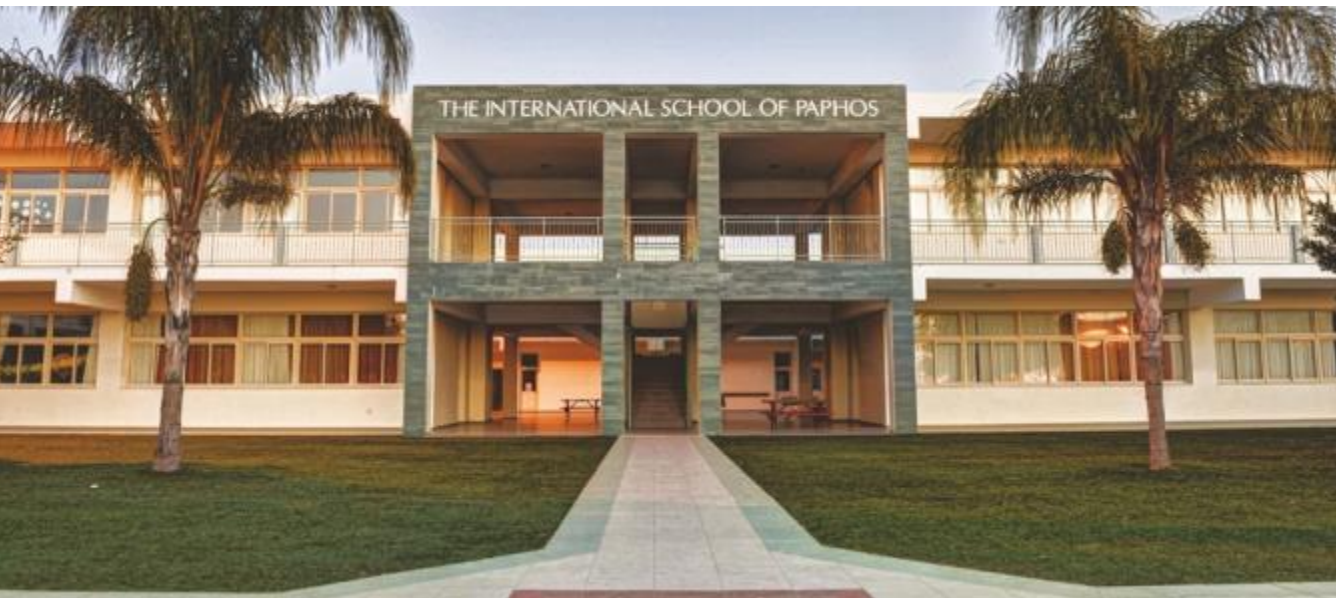


Traditional & Contemporary Dining



Pafos is well known for its seafood and local produce, and as such its local restaurants are known for the quality and freshness of their cuisine. Pafos offers a wide selection of traditional taverns, family-friendly restaurants, stylish cafés and some of the best seafood restaurants on the island.

Private Schools



The private schools offer a well balanced education based on the English National Curriculum


AMAYA

RESIDENCES



PLACES OF INTEREST

1. Pafos Castle
2. Kato Pafos Archeological Park
3. Paphos Mosaics
4. Tomb of the Kings
5. Town Centre km

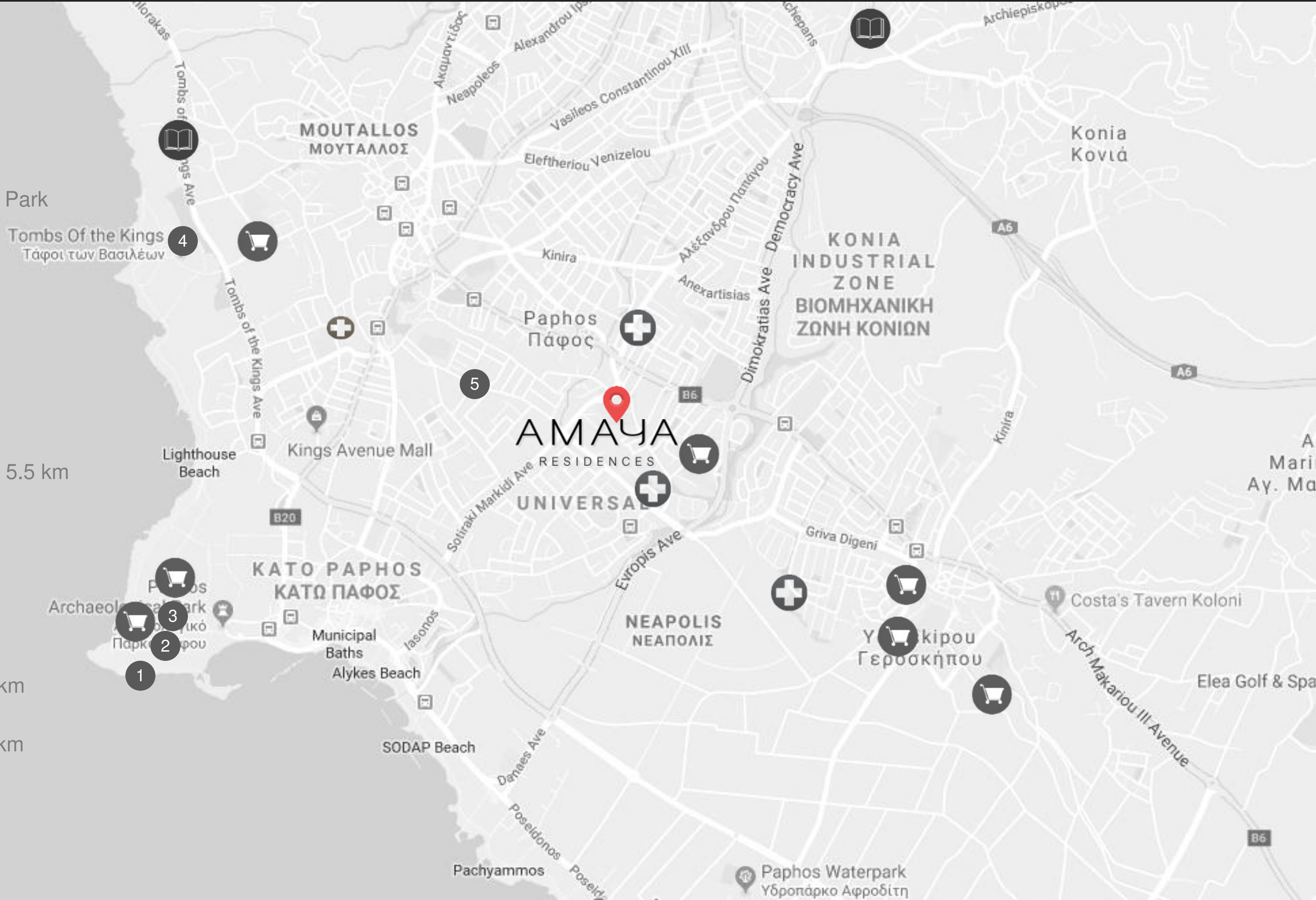
 Private Schools
International School 5.5 km
Aspire School 6 km

 Supermarkets

 Hospitals

 Paphos Airport 13.6 km

 Larnaca Airport 130 km



SITE ANALYSIS

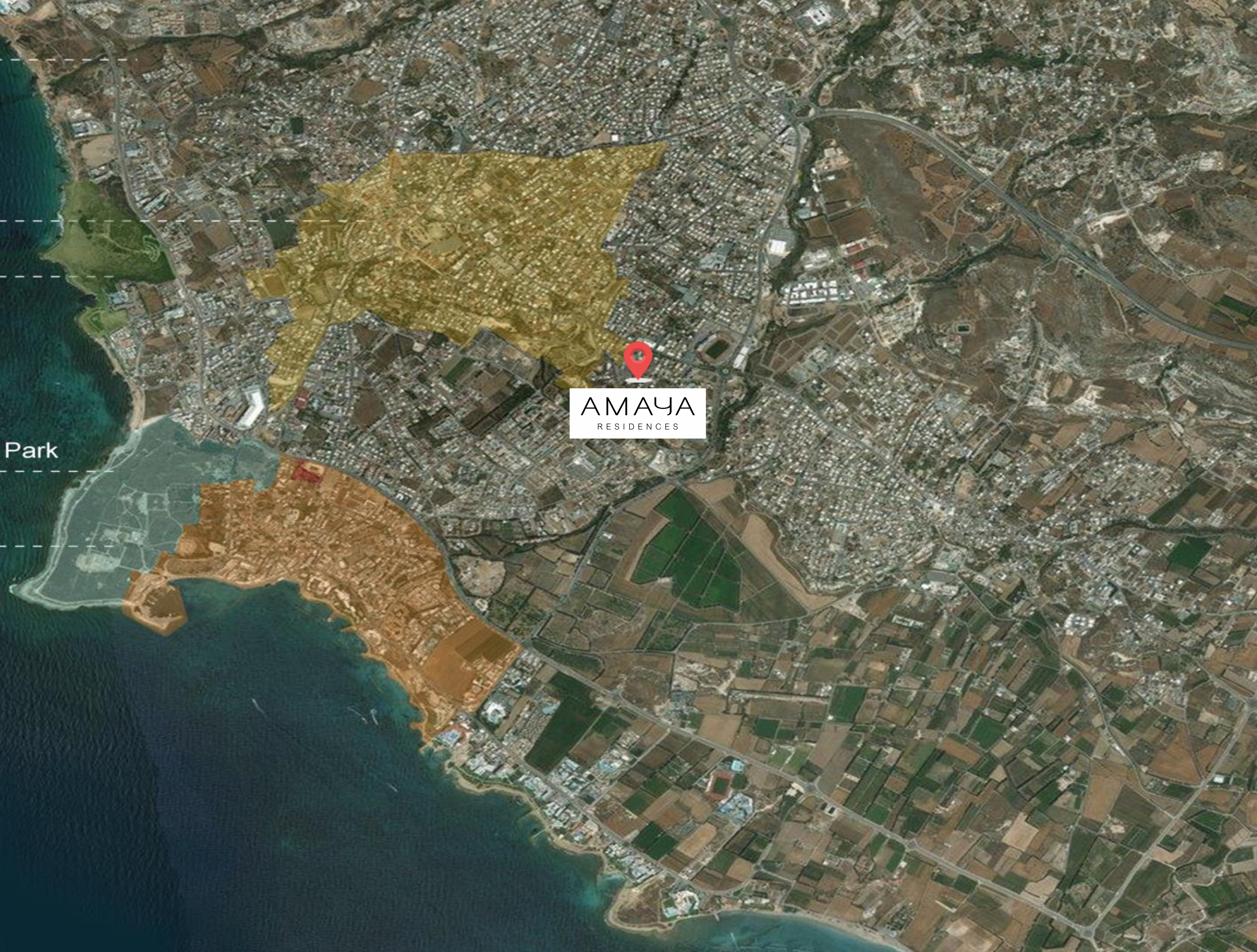
Paphos

City Centre

Tombs of the Kings

Kato Paphos Archeological Park

Paphos Harbour



AMAYA
RESIDENCES

A Five Star Location

Amaya Residences is located minutes away from Pafos' 5 star hotels.



Elysium Hotel



Annabelle Hotel



Almyra Hotel



**Olympic Lagoon
Resort**



Athena Beach Hotel

Amenities

AMENITIES NEAR AMAYA RESIDENCES



Bakery
2 km



Supermarket
3 km



Private English
School 5.5 km



Private Hospital
0.5 km



Pharmacy
1.5 km



Petrol Station
1.2 km



Sporting
Centre 2 km



Tavern
1 km



SANDY BEACHES

A selection of sandy beaches are within 3 km away.

CAFES & BARS

Just 1 km away from a wide selection of chic cafes and beach bars.



KINGS AVENUE MALL

Only 3 km away of an impressive full concept shopping mall, with entertainment venues, cafes and restaurants.

Views from the site



Views from the site



Amaya Residences is located in a desirable location in the heart of Pafos Town, offering contemporary city living. This luxury residential development consists of 1, 2 and 3 bedroom apartments and a private residents swimming pool.



The project offers contemporary architecture with high quality finishes and a Mediterranean ambience that one can enjoy from the spacious verandas.








The project is set in a quiet affluent family neighborhood, just minutes away from a plethora of amenities and services and within a short drive from a selection of sandy beaches.

SITE PLAN



-  BLOCK A
-  BLOCK B
-  BLOCK C

2 Bedroom Apartment



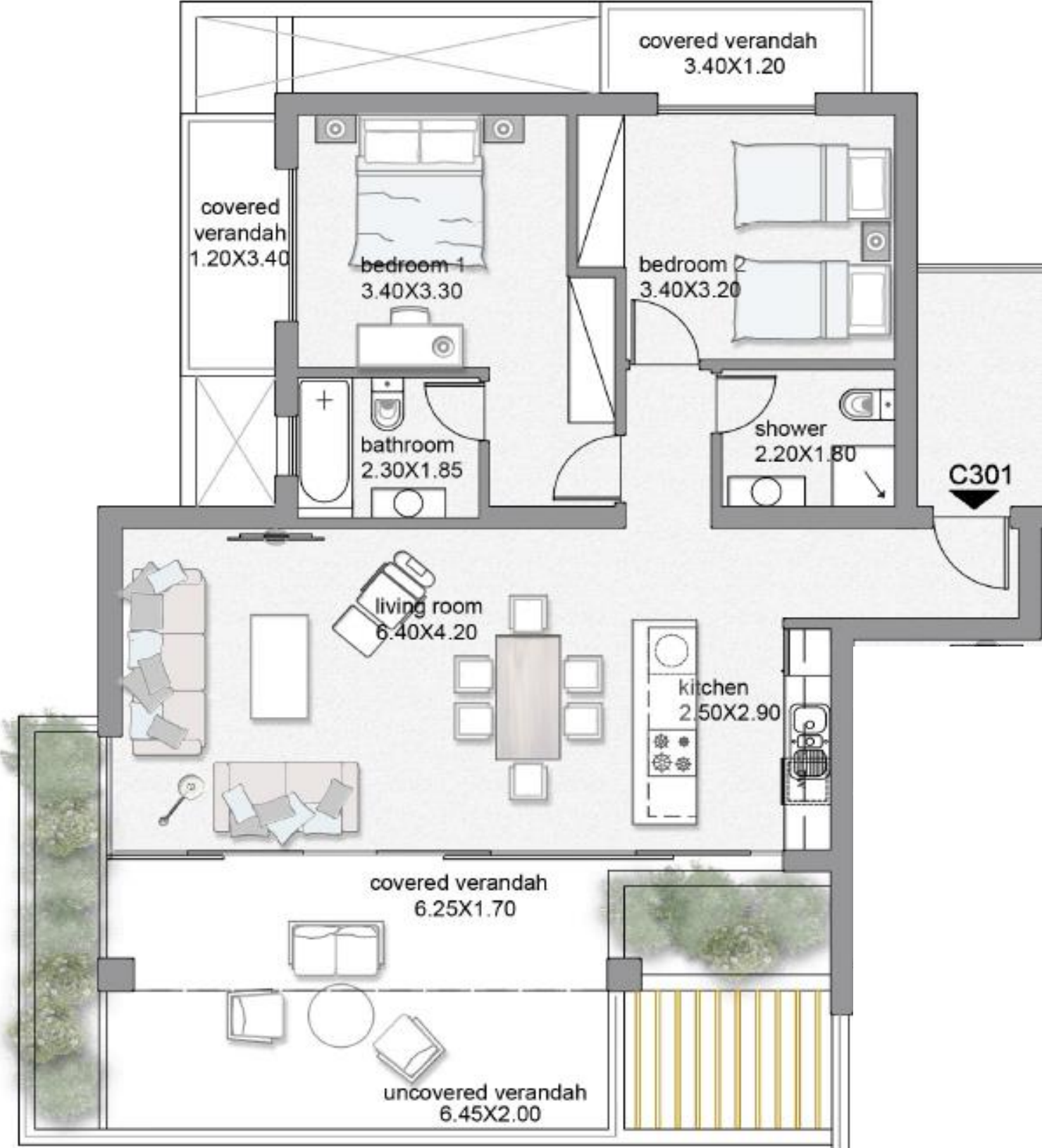






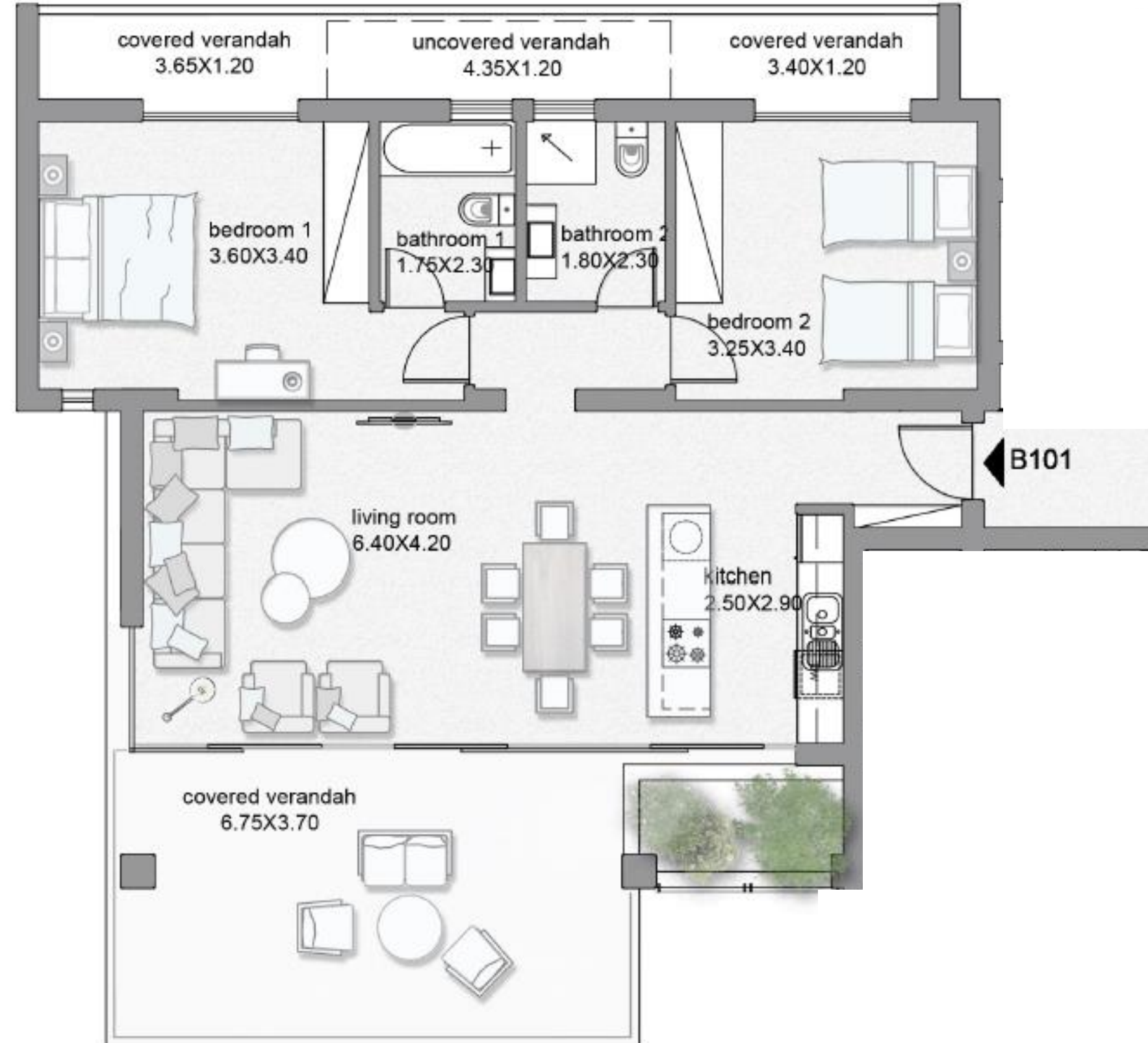
SAMPLE 2 BEDROOM APARTMENT BLOCKS A & C

Total cov. area from 108 to 119 m²



SAMPLE 2 BEDROOM APARTMENT BLOCK B

Total cov. area from 108 to 125 m²

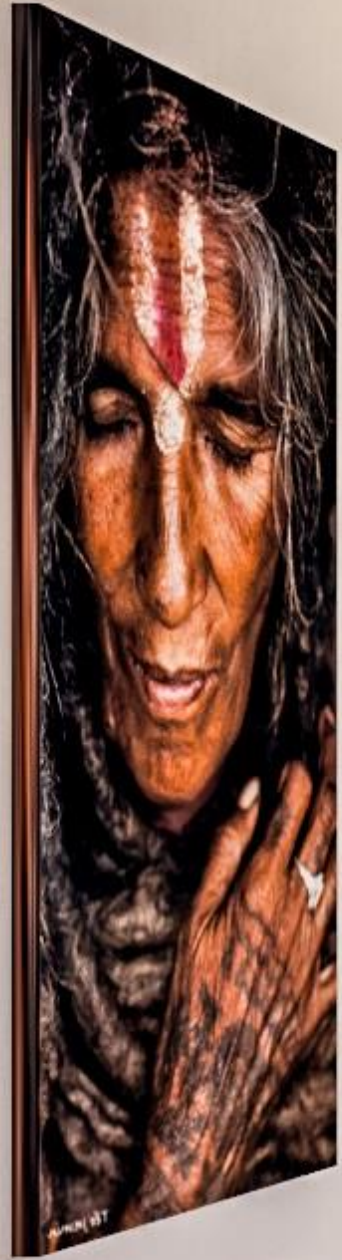


3 Bedroom apartment











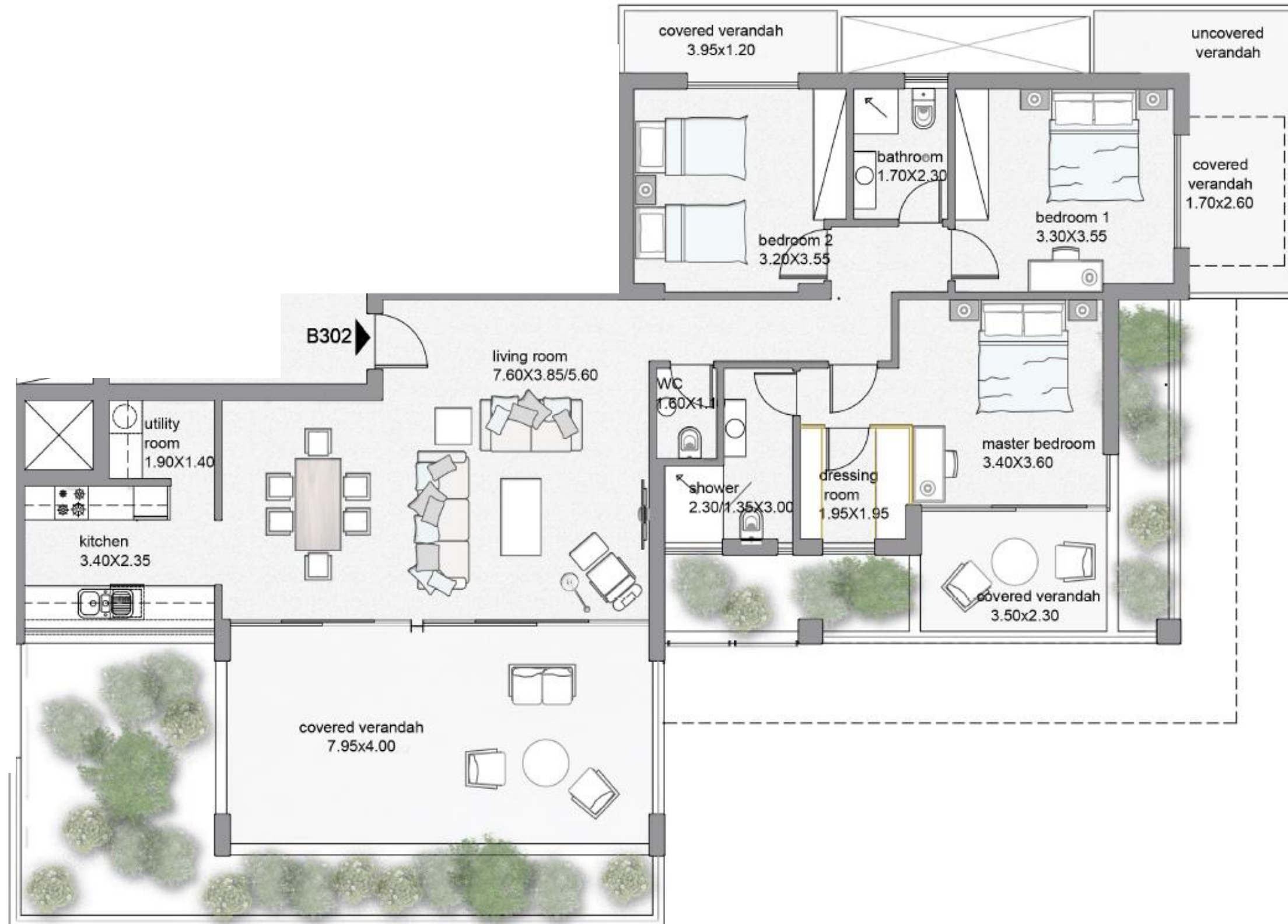
SAMPLE 3 BEDROOM APARTMENT BLOCKS A & C

Total cov. Area from 161 to 195 m²



SAMPLE 3 BEDROOM APARTMENT BLOCK B

Total cov. Area from 169 to 174 m²



3 Bedroom Penthouse

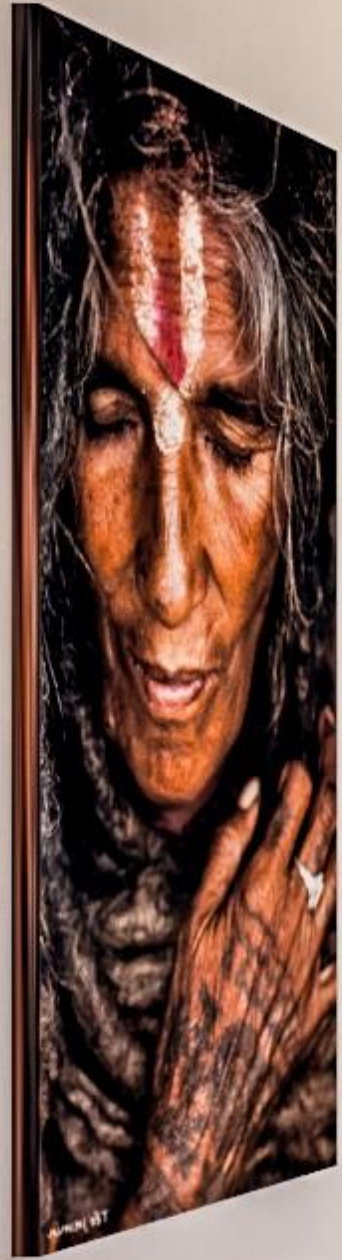














SAMPLE 3 BEDROOM PENTHOUSE BLOCKS A & C

Total cov. area 139 m²



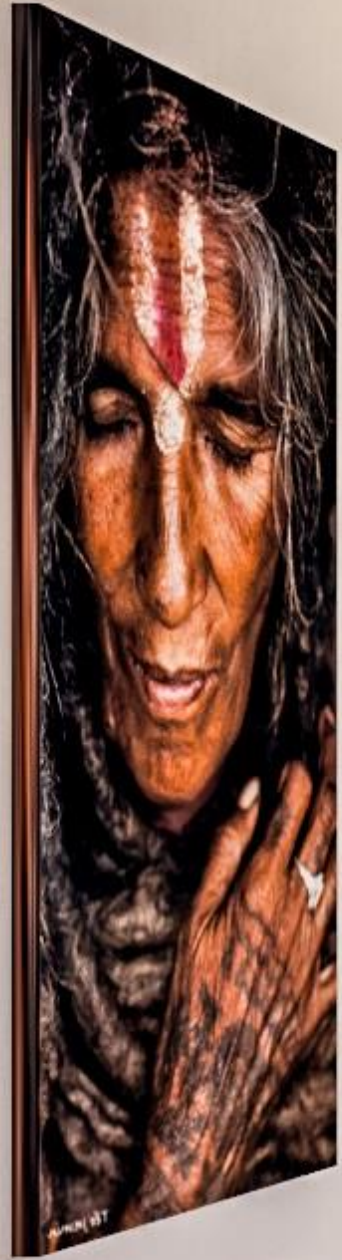
3 Bedroom Penthouse







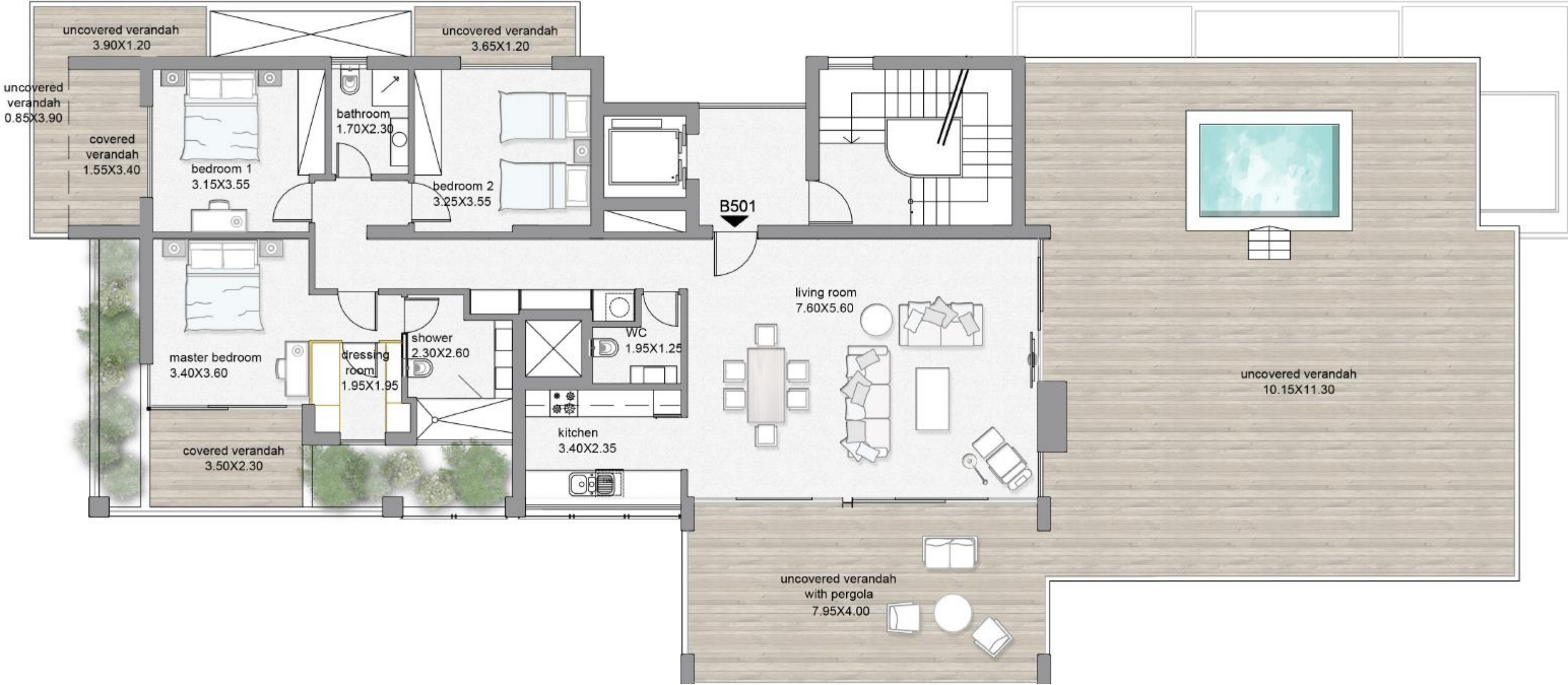






BLOCK B 501

3 Bedroom Penthouse, Total cov. area 180 m²





AMAYA

RESIDENCES

