



KONIA PARK II
Villas





Set in the prestigious hillside suburb of Konia, Konia Park 2 comprises 16 detached villas with beautiful countryside views. The contemporary designs are available in three styles, offering varying floor plans to suit individual lifestyle requirements. All enjoy a high quality finish internally and externally. The architect has used clean modern lines with natural materials and open spaces to achieve a perfect balance of design and practicality.

Pafilia

A GREAT LOCATION



5 mins



5mins



12 mins



3 mins



12 mins



6 mins



15 mins



Pafos 12 mins



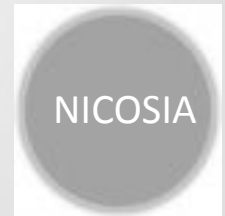
Larnaca 80 mins



Troodos 73 mins



40 mins



95mins

KONIA PARK II

VILLA 9, TYPE A

Price: €500,000

Bedrooms	3
Bathrooms	1 Family Bathroom, 1 ensuite
Private parking	Private parking
Plot area	292 sqm
Covered internal area	127,33 sqm
Uncovered balcony	10.92 sqm



SIMILAR VILLA



SIMILAR VILLA



SIMILAR INTERIORS





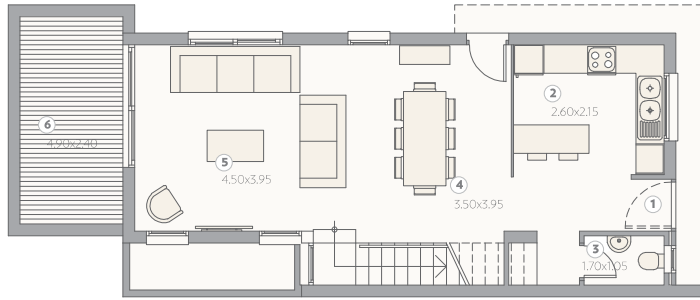
SIMILAR INTERIORS

SIMILAR INTERIORS

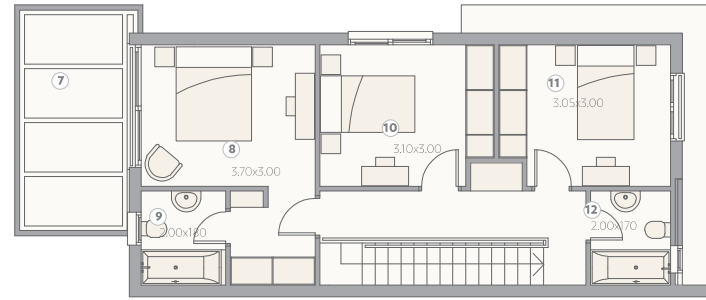


SIMILAR INTERIORS

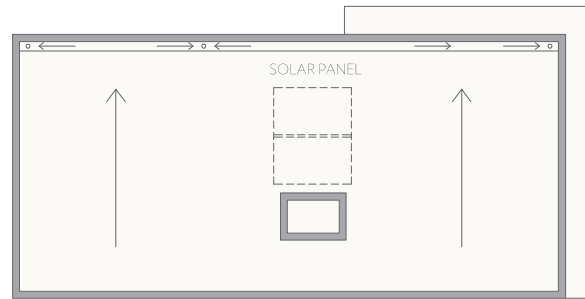




GROUND FLOOR



FIRST FLOOR



ROOF

Key

- ① ENTRANCE
- ② KITCHEN
- ③ WC
- ④ DINING ROOM
- ⑤ LIVING ROOM
- ⑥ UN. VERANDA
- ⑦ PERGOLA
- ⑧ MASTER BEDROOM
- ⑨ ENSUITE BATHROOM
- ⑩ BEDROOM 2
- ⑪ BEDROOM 3
- ⑫ BATHROOM

SAMPLE PLANS FOR TYPE A

Konia Park II Site Plan



