



PARK
RESIDENCES





PARK RESIDENCES

Set in the heart of Limassol just moments away from the seafront, chic café culture and international business district, lies Park Residences.

A collection of 17 private luxury apartments with either 2 or 3 bedrooms, and an impressive 3 bedroom penthouse on the 5th floor.

Situated in a quiet affluent family neighborhood, this residential city haven is surrounded by a wide selection of amenities, close to a beautiful park and within walking distance of the sea front.

A GREAT LOCATION

SHOPPING

2 mins

TOWN
CENTRE

5 mins

HOTELS

2 mins

HIGHWAY

1 min

BEACH

1 min

BANK

2 mins

PORT

10 mins



Pafos 45 mins



Larnaca 42 mins



Troodos 54 mins

PAFOS

45 mins

NICOSIA

60 mins



Pafilia



Pafilia



Pafilia



Pafilia

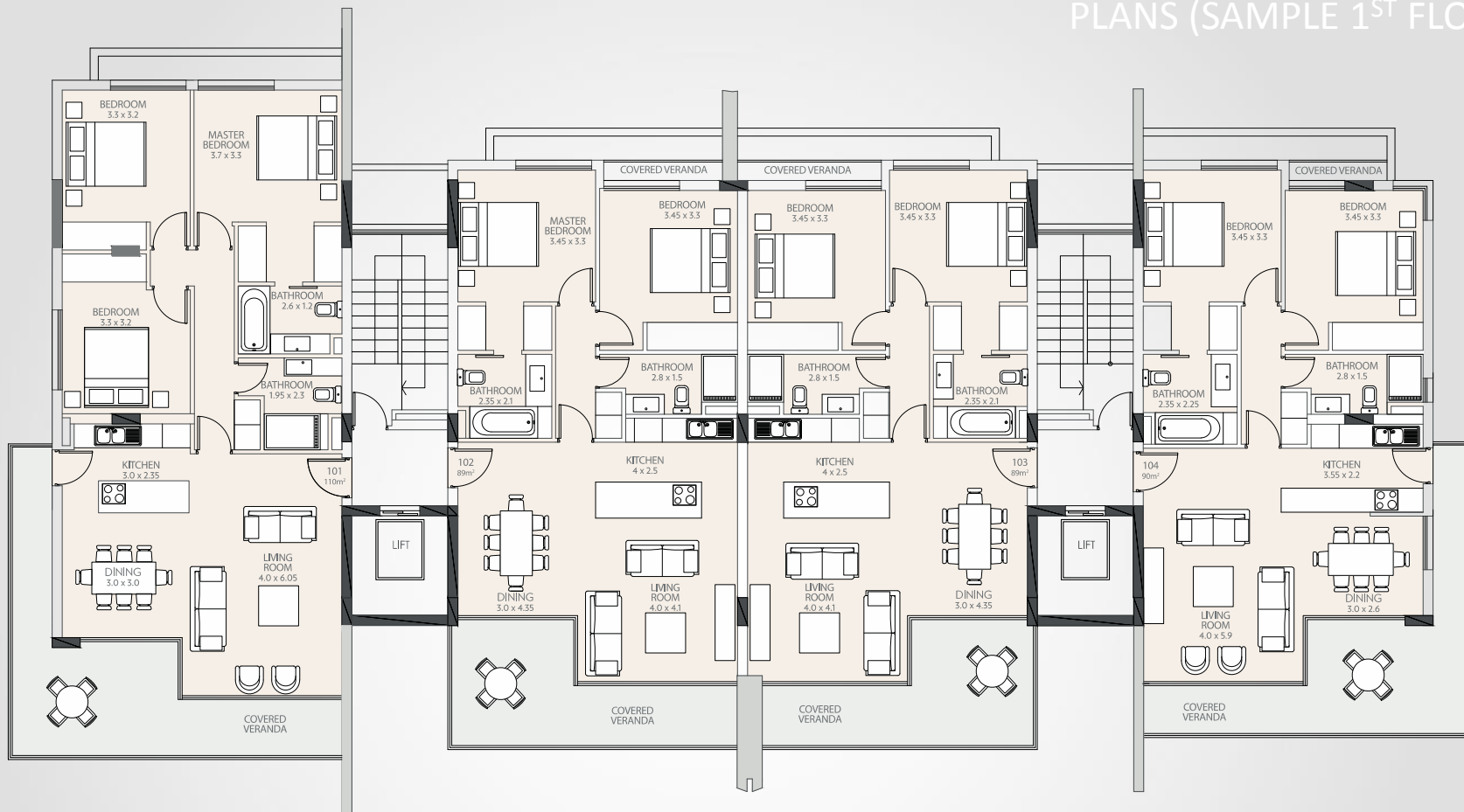


GROUND FLOOR PLAN

Ground Floor



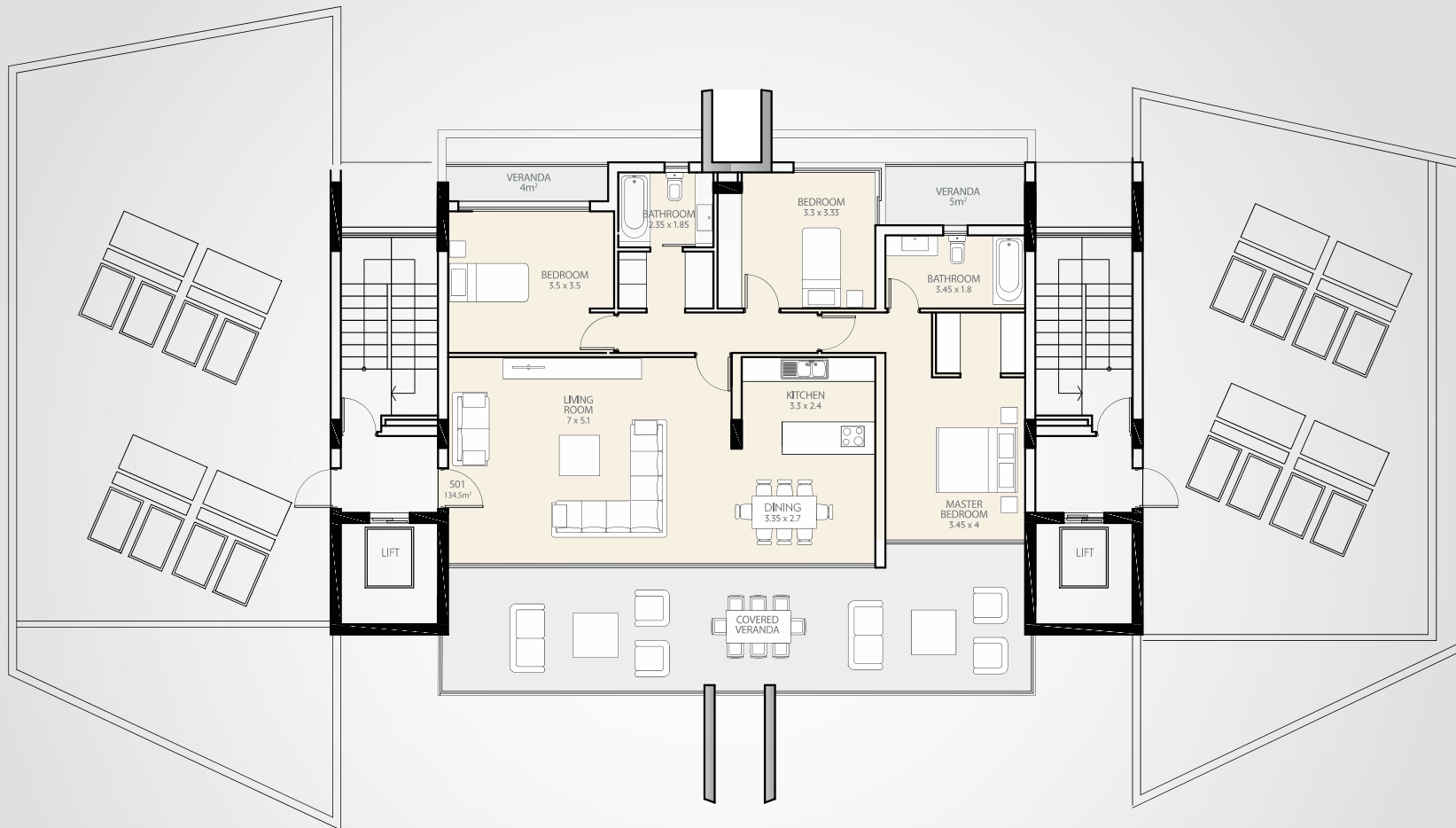
PLANS (SAMPLE 1ST FLOOR)



APARTMENT SIZES:

2 BED 124-135 m²
 3 BED 151-215 m²

Floor Plan Levels 1-4

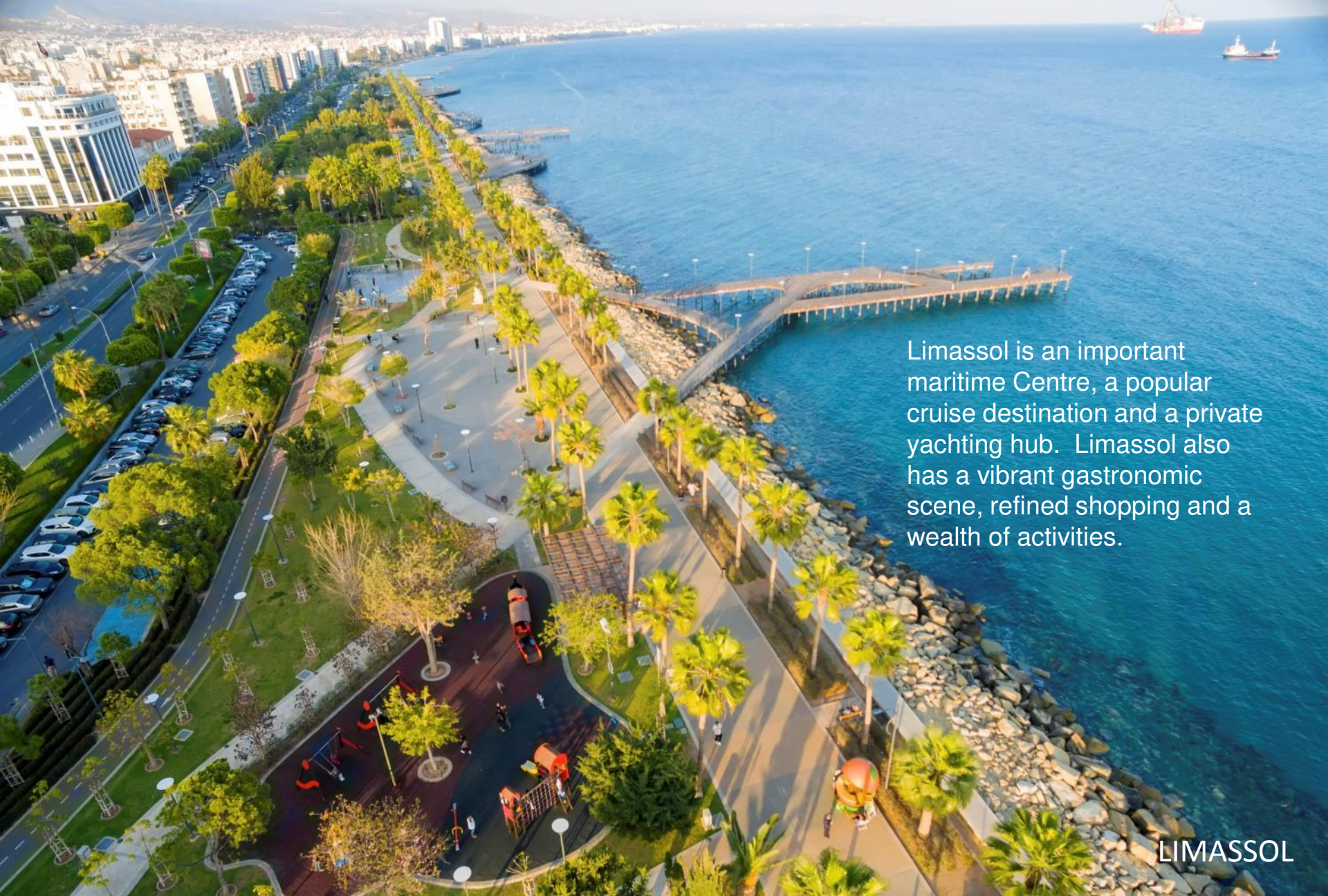


Floor Plan Penthouse Level 5



LIMASSOL

Limassol is Cyprus' cosmopolitan capital, its most important business district and a vibrant modern playground. It is consistently ranked as one of the world's leading cities for quality of life. Nowhere in Cyprus is there a richer mix of modern culture and fascinating heritage.



Limassol is an important maritime Centre, a popular cruise destination and a private yachting hub. Limassol also has a vibrant gastronomic scene, refined shopping and a wealth of activities.

LIMASSOL



LIMASSOL

Pafília