

VETRO

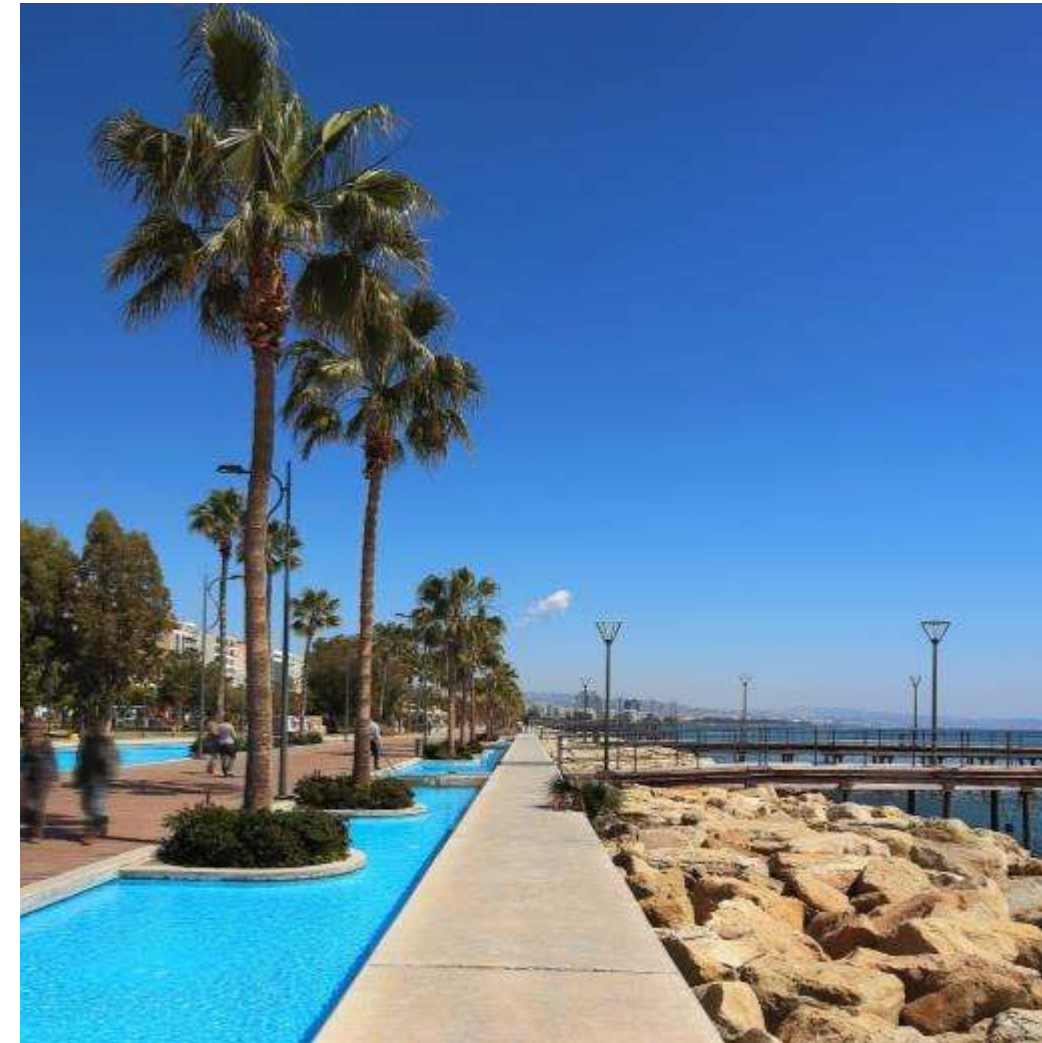
SUITES



LIMASSOL

THE CITY OF CHOICE

Limassol is Cyprus' cosmopolitan capital, its most important business district and a vibrant modern playground. It is consistently ranked as one of the world's leading cities for quality of life. Nowhere in Cyprus is there a richer mix of modern culture and fascinating heritage.



Limassol's enchanting promenade is situated on the prime seafront boulevard. It is the ideal place for walking, jogging, spending time on the beach or taking time for peaceful contemplation under the shade of a mature palm tree.



Vibrant Limassol

The city offers an active, vibrant and varied choice of restaurants, stylish cafes, bars and chic lounges.





A MIX OF FINE AND CASUAL DINNING

An Adventure in Taste

Limassol's gastronomic scene
comprises a delicious mix of fine and
casual dining. It offers a great selection
of cuisines as well as local traditional
food.

Private Schools

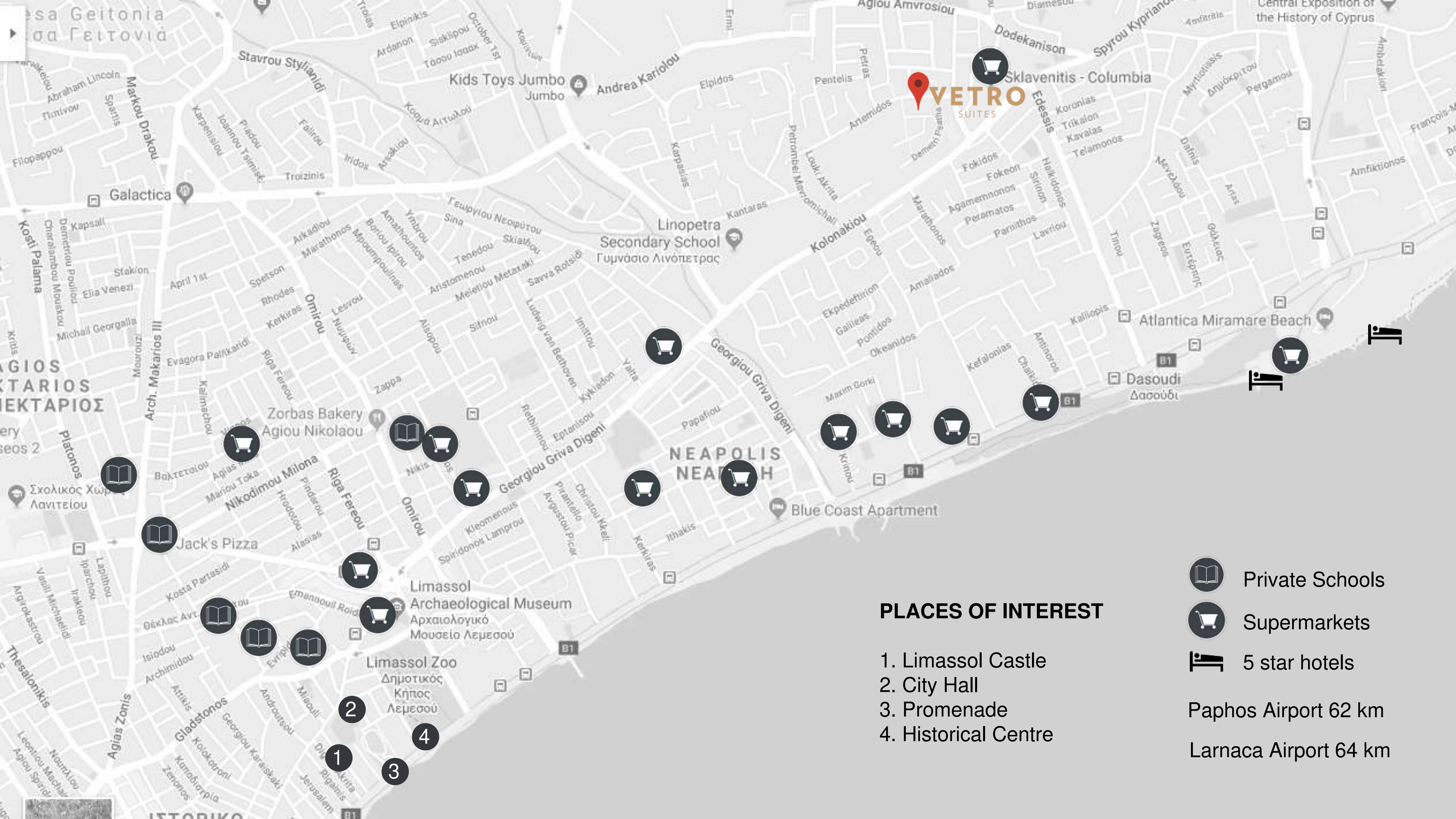
There are a number of private schools (Greek, English, French, and Russian) available in Limassol.



VETRO

SUITES






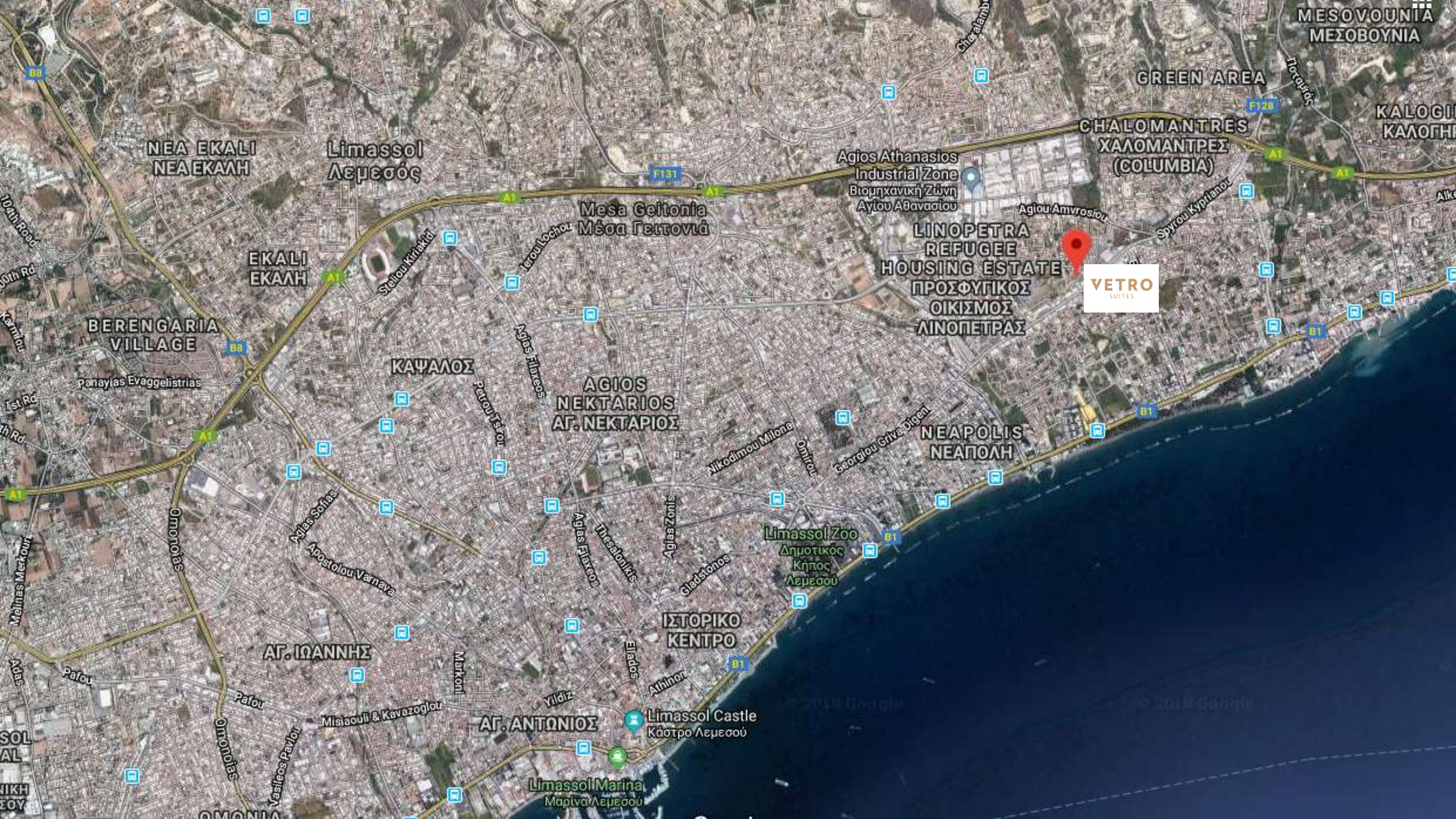
VETRO
SUITES

PLACES OF INTEREST

1. Limassol Castle
2. City Hall
3. Promenade
4. Historical Centre

-  Private Schools
-  Supermarkets
-  5 star hotels

Paphos Airport 62 km
Larnaca Airport 64 km



MESOVOUNIA
MEΣOBOYHIA

GREEN AREA

KALOGHIA
KALOGHIA

CHALOMANTRES
XALOMANTPES
(COLUMBIA)

NEA EKALI
NEA EKALH

Limassol
Λεμεσός

Agios Athanasios
Industrial Zone
Βιομηχανική Ζώνη
Αγίου Αθανασίου

Agiou Amvrosiou

Spyrou Kyriakou

Mesa Geltonia
Μέσα Γελτονιά

EKALI
EKALH

BERENGARIA
VILLAGE

Panayias Evangelistrias

KASYALOS

AGIOS
NEKTARIOS
ΑΓ. ΝΕΚΤΑΡΙΟΣ

Nikodimou Milona

Onitrou

Georgiou Griva Digeni

NEAPOLIS
ΝΕΑΠΟΛΗ

Agias Sofias

Apostolou Varnava

ΑΓ. ΙΩΑΝΝΗΣ

Agias Filareos

Thessalonikis

Agias Zonis

Gladstonos

ΙΣΤΟΡΙΚΟ
ΚΕΝΤΡΟ

Limassol Zoo
Δημοτικός
Κήπος
Λεμεσού

Eliaidos

Athinon

ΑΓ. ΑΝΤΩΝΙΟΣ

Limassol Castle
Κάστρο Λεμεσού

Limassol Marina
Μαρίνα Λεμεσού

Misiaouli & Kavazoglou

Pafou

OMONIA

Vasileos Pavlou

Markoni

Yildiz

OMONIA

SOL
AL

NIKH
ΣΟΥ

A Five Star Location

Vetro Suites is located minutes away from all Limassol's 5 star hotels.



Four Seasons Hotel



Amathus Beach Hotel



Grand Resort



Amara Hotel



Parklane Resort

Amenities

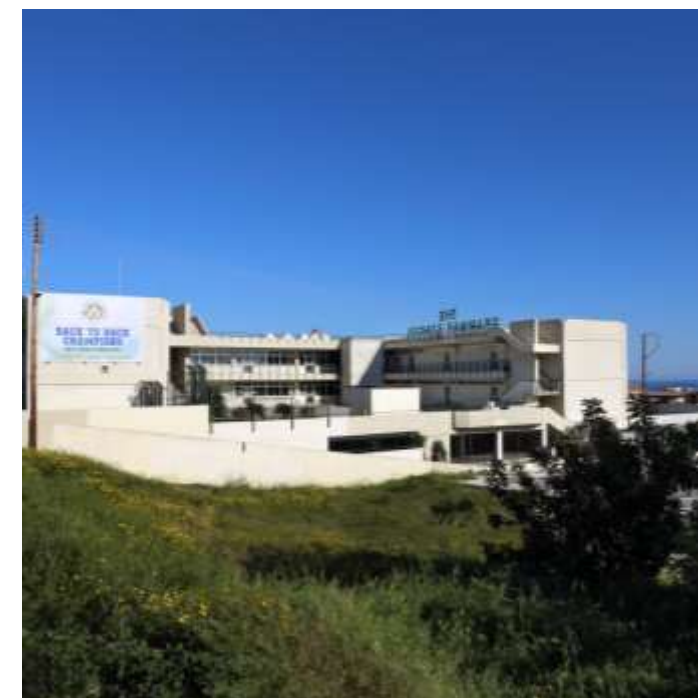
AMENITIES NEAR VETRO SUITES



Bakery 0.5 km



Supermarket 150 m



Private English
School 3.8 km



Private Hospital 3.5 km



Pharmacy 1 km



Petrol Station 0.5 km



Pizza Restaurant 150 m



Bank 150 m



CAFES & BARS

Just 2 km away from a wide selection of chic cafes and beach bars.



MARINA

Just 5 km away, Limassol Marina offers 650 berths for yachts up to 110m. It also has a commercial area comprising 14 restaurants and cafes, 40 shops, a spa, gym and cultural centre.

SANDY BEACHES

A selection of sandy beaches are within 5 km away.





Location

Exclusive area in Ayios Athanasios, centrally located and moments away from the coastline.

Views

Spectacular views of the Mediterranean sea, the city and the rural surroundings.

Design

An elegant contemporary development with open-plan living areas.

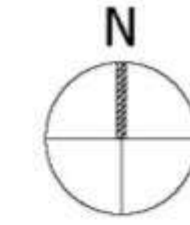
Vetro Suites, is located in the heart of cosmopolitan city of Limassol, surrounded by a vast array of amenities. Comprising ten luxuriously appointed 2 and 3 bedroom apartments, all with open-plan living areas that extend onto large terraces, offers the perfect Mediterranean home.



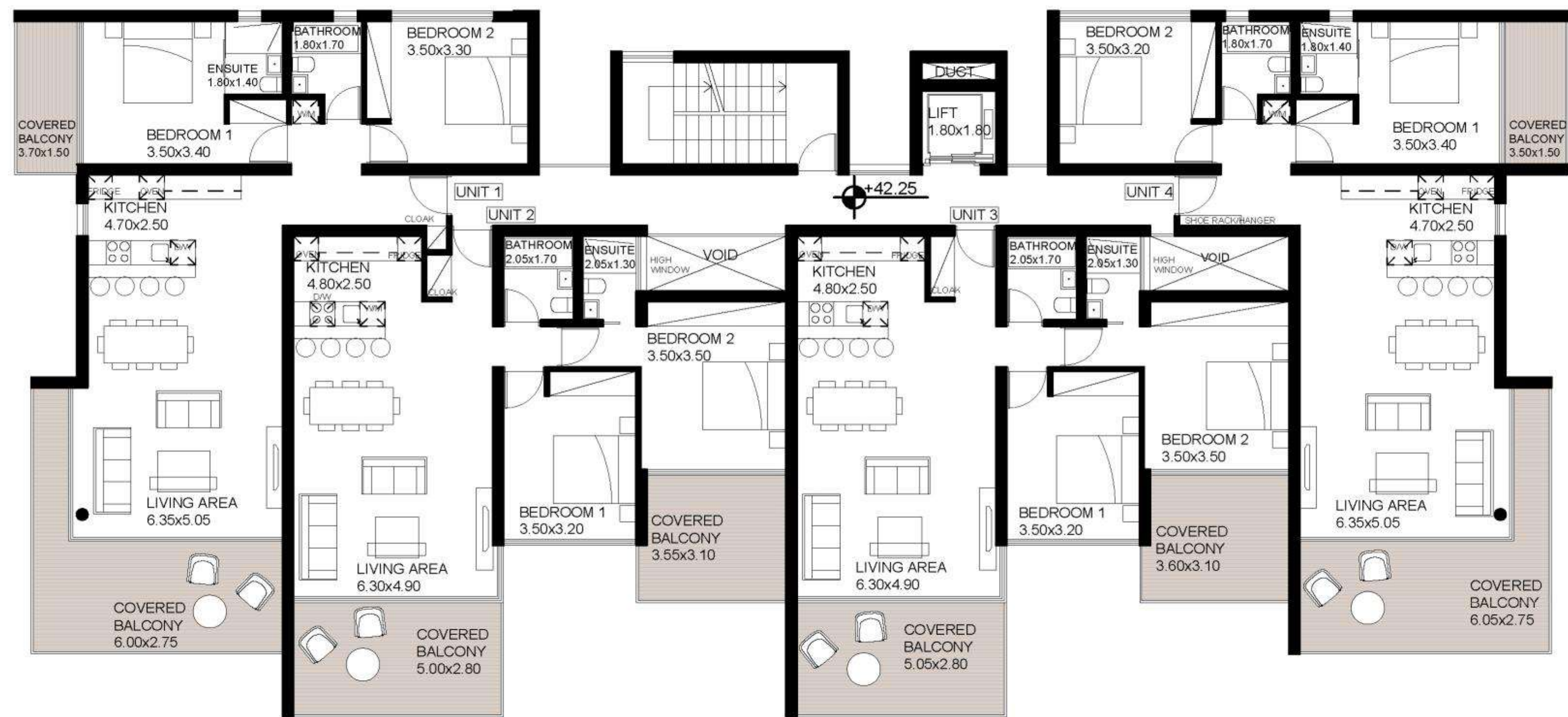




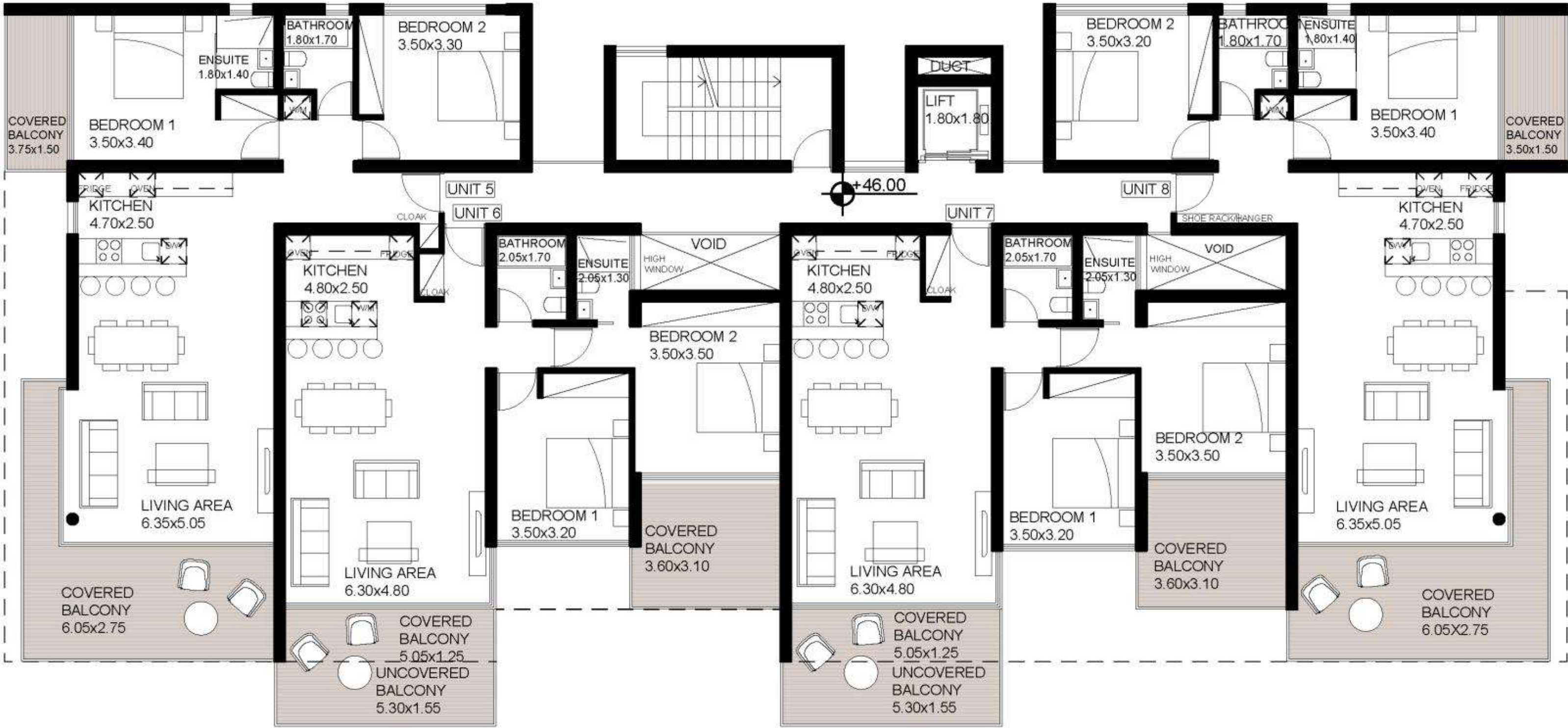
SITE PLAN



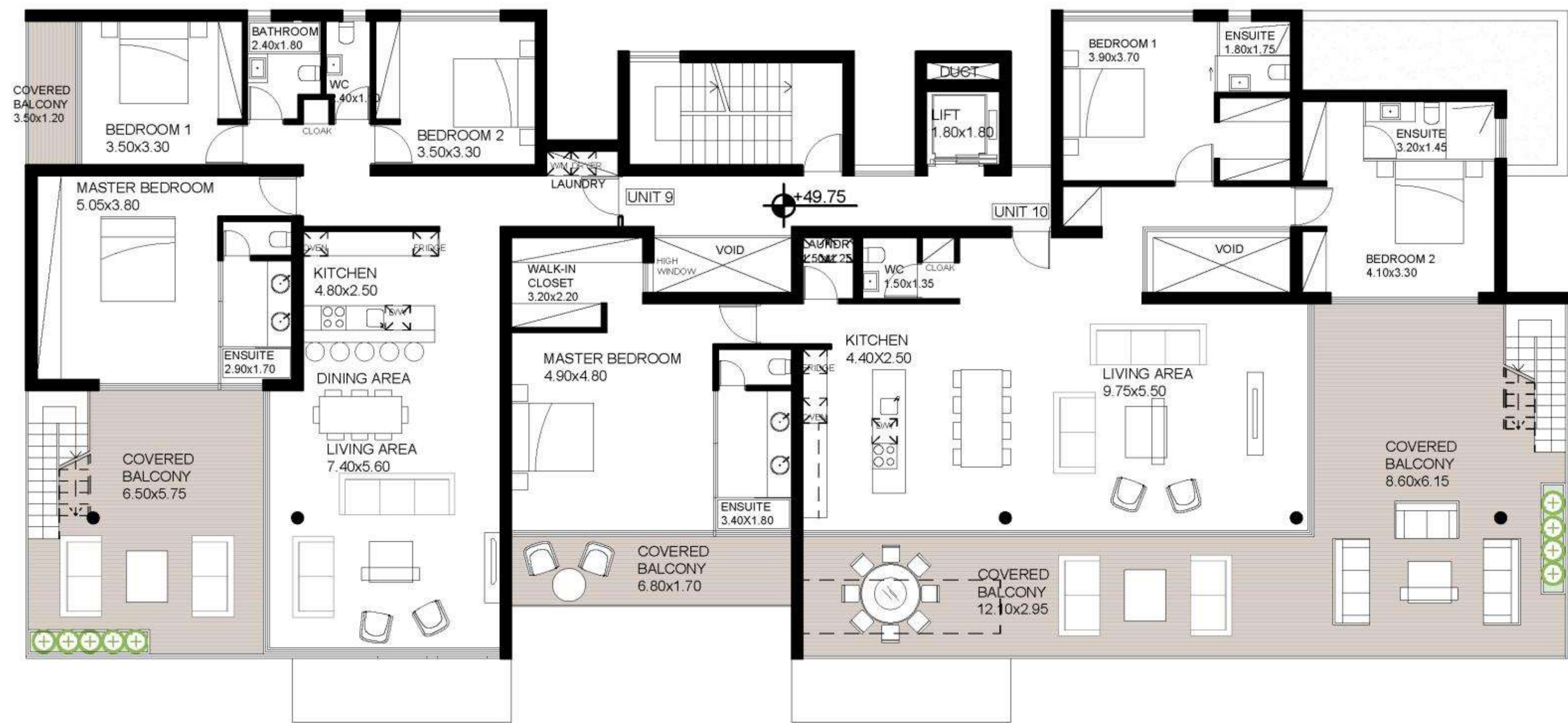
FIRST FLOOR PLANS



SECOND FLOOR PLANS



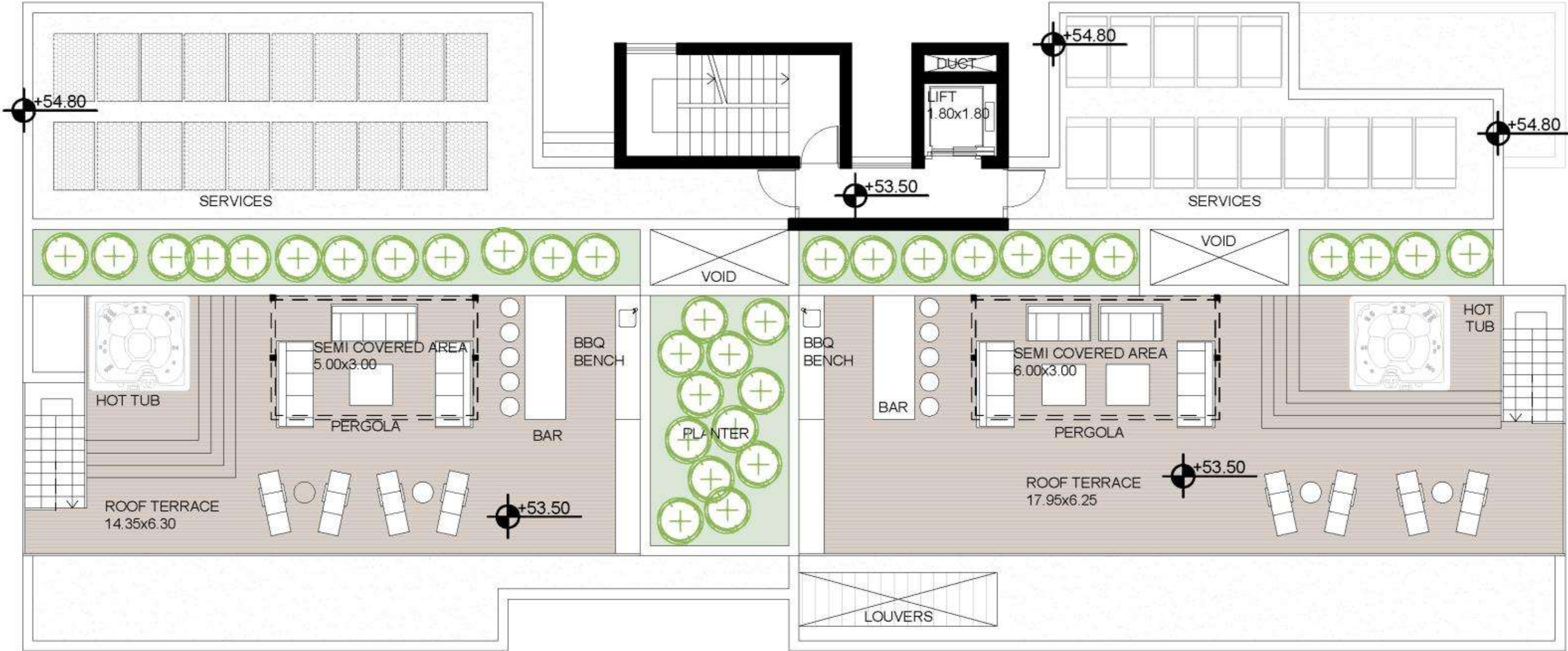
THIRD FLOOR PLANS







ROOF TERRACE PLANS









VETRO

SUITES