



VISTA

LIMASSOL



LIMASSOL

THE CITY OF CHOICE

Limassol is Cyprus' cosmopolitan capital, its most important business district and a vibrant modern playground. It is consistently ranked as one of the world's leading cities for quality of life.



Nowhere in Cyprus is there a richer mix of modern culture and fascinating heritage.



Traditional Limassol

Away from the tourist areas, the Limassol countryside has a diverse wealth of its own with traditional villages, vineyards and wineries, monasteries, remote forests.

Limassol Promenade

Limassol's enchanting promenade is situated on the prime seafront boulevard. It is the ideal place for walking, jogging, spending time on the beach or taking time for peaceful contemplation under the shade of a mature palm tree.



A modern building with a glass facade and palm trees at night. The building has a curved glass wall that reflects the sky and the palm trees. In the foreground, there is a walkway with several small, purple, illuminated fountains. The scene is lit with warm, ambient lighting, creating a vibrant and modern atmosphere.

Vibrant Limassol

The city offers an active, vibrant and varied choice of restaurants, stylish cafes, bars and chic lounges.

An Adventure in Taste

Limassol's gastronomic scene comprises a delicious mix of fine and casual dining. It offers a great selection of cuisines as well as local traditional food.



Private Schools

There are a number of private schools (Greek, English, French, and Russian) available in Limassol.





Luxury Shopping

Limassol's shopping is refined. An abundance of global luxury brands serve the exquisite tastes of the town's stylish residents and visitors.



ALIVE WITH HISTORY

It has a charming medieval quarter, beautiful Byzantine castle and attractive Colonial era architecture.



LEISURE

A year-round programme of major international events.

Fine-art galleries, historic sites, museums and theatres.



LIFESTYLE

Limassol is an important maritime centre, a popular cruise destination and a private yachting hub.

An architectural rendering of a modern, multi-story residential complex. The central focus is a large, rectangular swimming pool with a curved end, surrounded by a light-colored tiled deck. Several lounge chairs with white cushions are arranged around the pool. The buildings are white with large glass windows and balconies, some featuring outdoor furniture. The scene is set against a clear blue sky with a few trees and a distant landscape visible in the background.

V
VISTA
LIMASSOL

V

VISTA

LIMASSOL



LUXURY TOWNHOUSES OVERLOOKING THE MEDITERRANEAN

Vista is located in a prominent hillside residential suburb of Limassol with beautiful coastal views. It provides an enchanting community combining modern elegance with Mediterranean design in a quiet neighbourhood, just minutes from the city. The development comprises twenty 2-bedroom townhouses, each with private roof garden, situated around a large residents pool and sun terrace. The contemporary homes, feature open plan layouts, airy interiors, and high quality materials and fixtures.

A desirable suburb within five minutes of the city.





VISTA
LIMASSOL

Agios Tychon
Αγ. Τύχων

Agios Athanasios
Αγ. Αθανάσιος

Germasogeia
Γερμασόγεια

Mouttagiaka
Μουτταγιάκα

Limassol
Λεμεσός

Mesa Geltonia
Μέσα Γειτονιά

Agios Athanasios
Industrial Zone
Βιομηχανική Ζώνη
Αγίου Αθανασίου

Limassol Zoo
Limassol
Municipal
Garden

Limassol Marina

PLACES OF INTEREST

- 1. Limassol Castle
- 2. Limassol Marina
- 3. Old Port
- 4. Cathedral
- 5. City Hall

 Private Schools

 Supermarkets

Paphos Airport 65 km

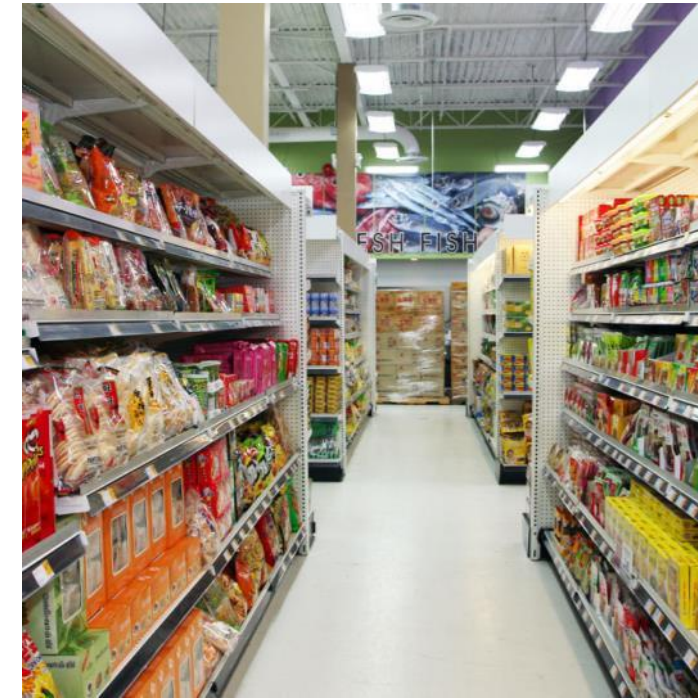
Larnaca Airport 62 km

Amenities

AMENITIES NEAR VISTA



Bakery 1 km



Supermarket 500m



Private English School 8.7km



Private Hospital 9.9km



Pharmacy 4.0 km



Petrol Station 1.2 km



Athlesis Sporting Centre 350m

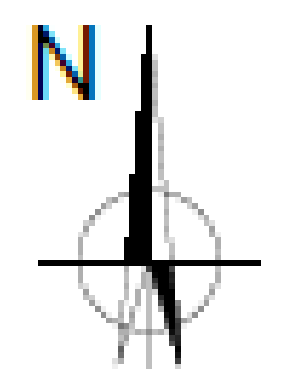
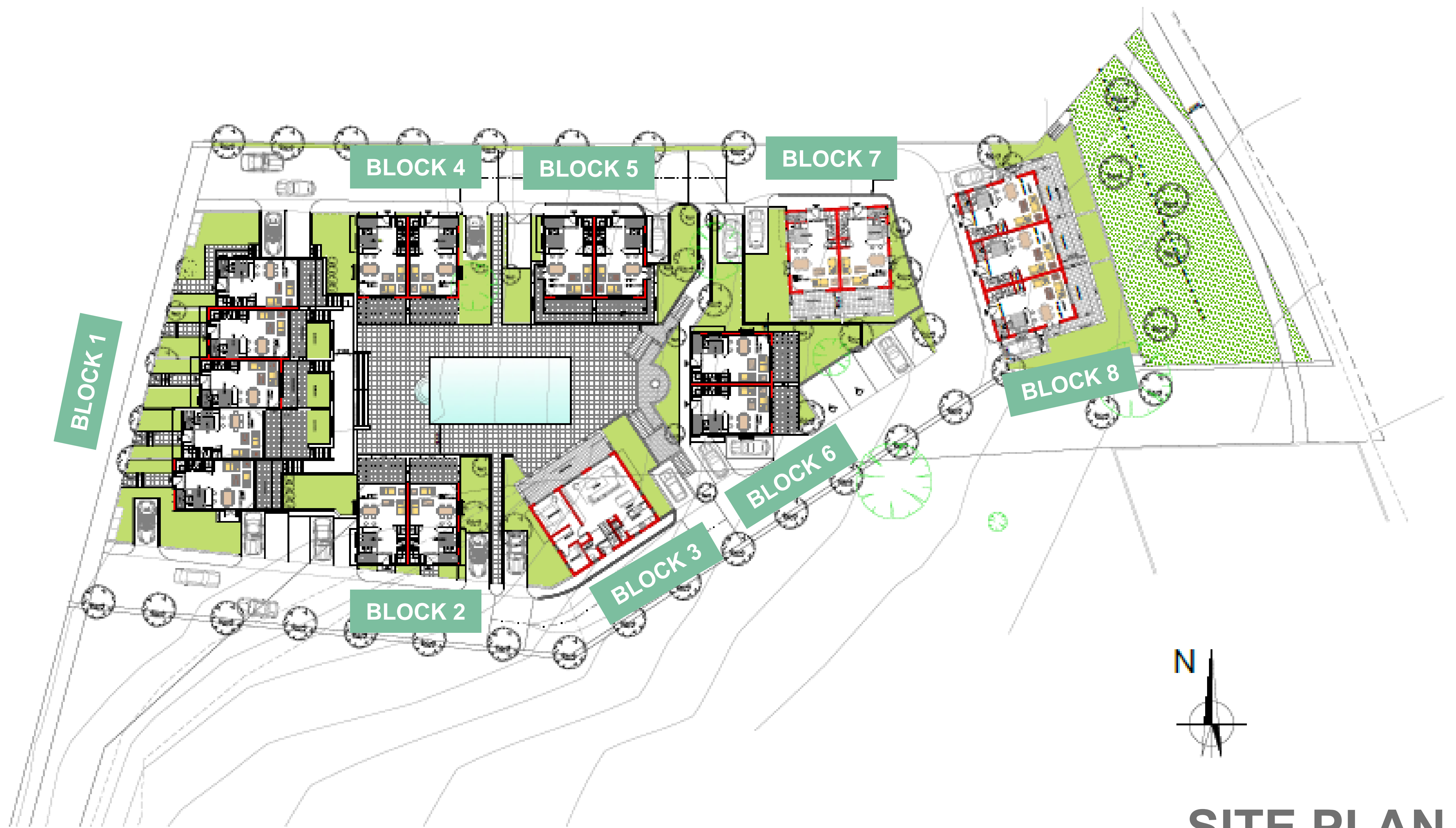


Tavern 100m



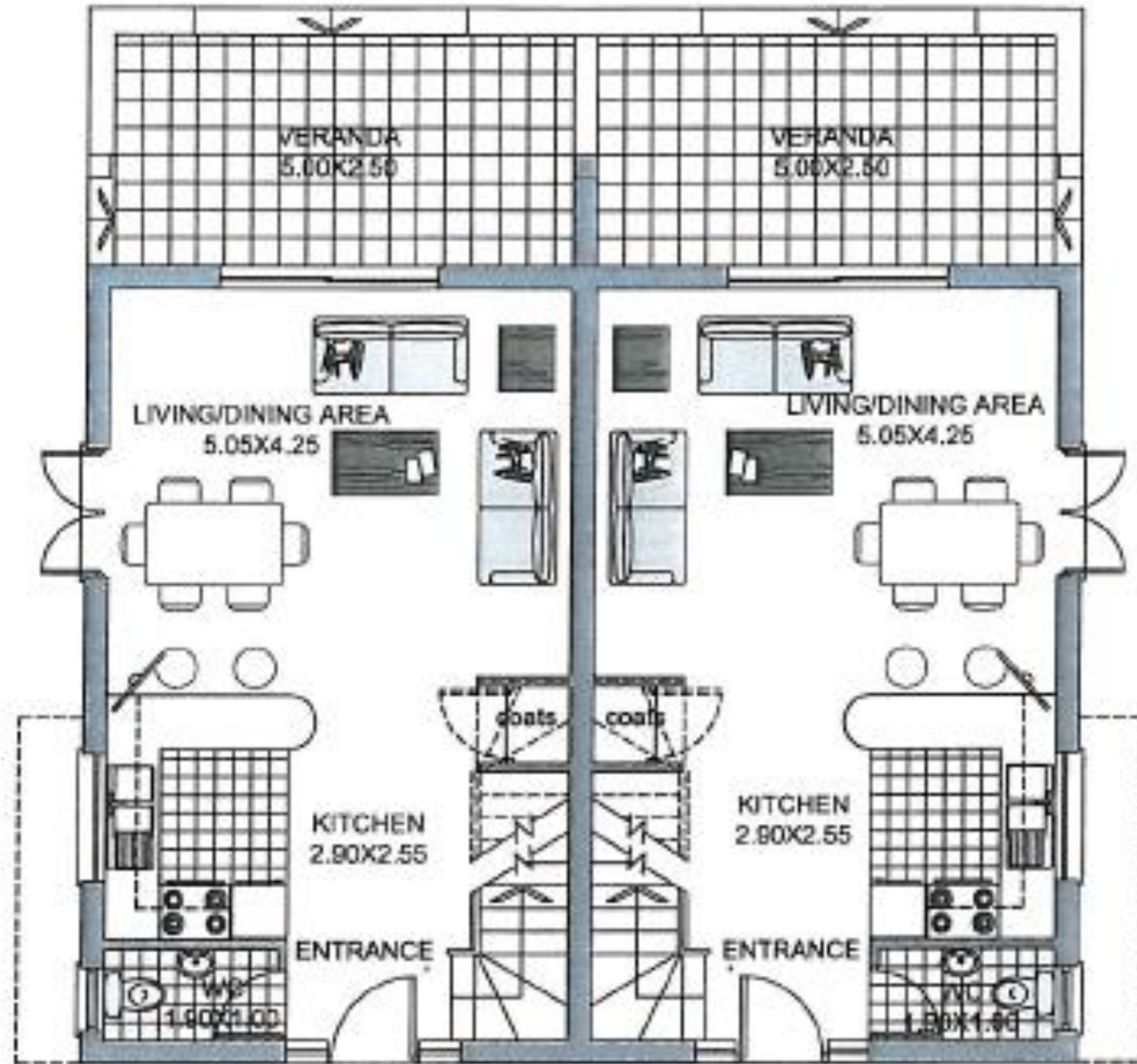
Amathus Archaeological Site

Situated near the vicinity of Agios Tychon, the ruins of one of the biggest ancient kingdoms of the island lay here: Amathus, which was also a royal city. It derived its name from Amathusa, the mother of King Kinyras from Paphos.

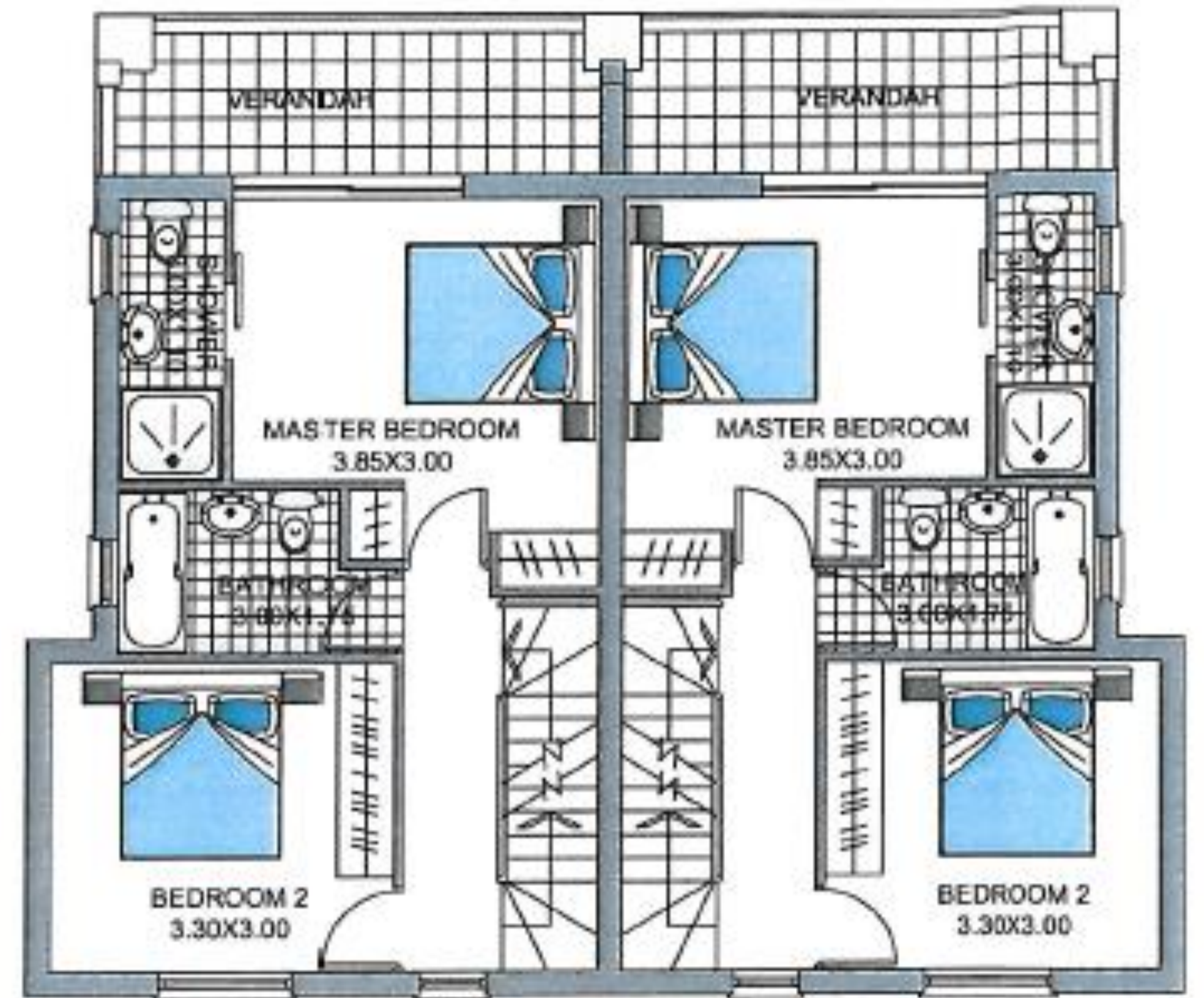


SITE PLAN

GROUND & FIRST FLOOR PLANS



GROUND FLOOR



FIRST FLOOR



















VISTA

LIMASSOL