

Vida

S U I T E S



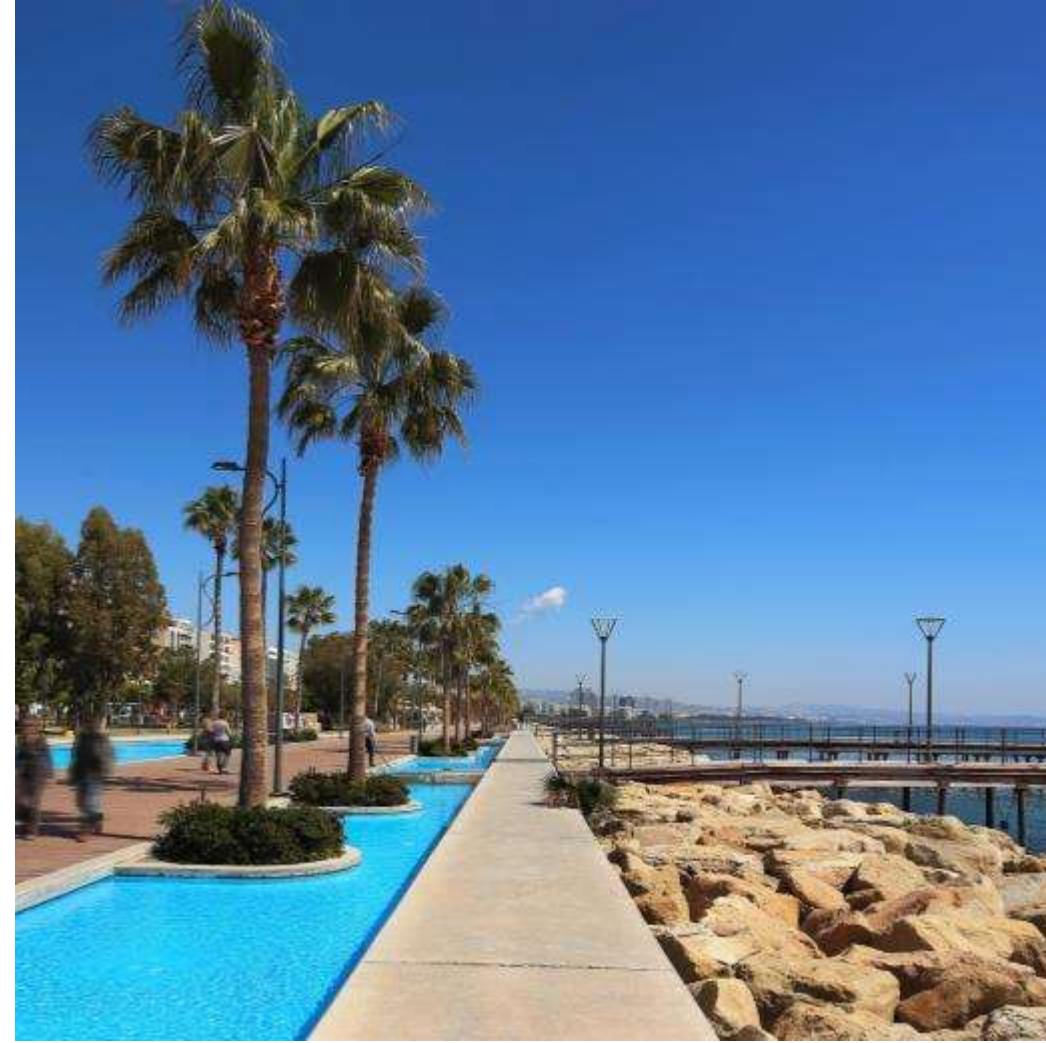


# LIMASSOL

## THE CITY OF CHOICE

Limassol is Cyprus' cosmopolitan capital, its most important business district and a vibrant modern playground. It is consistently ranked as one of the world's leading cities for quality of life. Nowhere in Cyprus is there a richer mix of modern culture and fascinating heritage.





Limassol's enchanting promenade is situated on the prime seafront boulevard. It is the ideal place for walking, jogging, spending time on the beach or taking time for peaceful contemplation under the shade of a mature palm tree.





# Vibrant Limassol

The city offers an active, vibrant and varied choice of restaurants, stylish cafes, bars and chic lounges.







A MIX OF FINE AND CASUAL DINNING

# An Adventure in Taste

Limassol's gastronomic scene comprises a delicious mix of fine and casual dining. It offers a great selection of cuisines as well as local traditional food.



# Private Schools

There are a number of private schools (Greek, English, French, and Russian) available in Limassol.











Vida  
SUITES

### PLACES OF INTEREST

- 1. Limassol Castle
- 2. City Hall
- 3. Promenade
- 4. Historical Centre

-  Private Schools
-  Supermarkets
-  5 star hotels

Paphos Airport 70 km

Larnaca Airport 61 km

1 Limassol Castle  
Κάστρο Λεμεσού

2 ΙΣΤΟΡΙΚΟ  
ΚΕΝΤΡΟ

3

4

ΑΓ. ΑΝΤΩΝΙΟΣ

Mesa Geitonia  
Μέσα Γειτονιά

ΑΓΙΟΣ  
ΝΕΚΤΑΡΙΟΣ  
ΑΓ. ΝΕΚΤΑΡΙΟΣ

ΝΕΑΡΟΛΙΣ  
ΝΕΑΠΟΛΗ

Limassol Zoo  
Δημοτικός  
Κήπος  
Λεμεσού

ΧΑΛΟΜΑΝΤΡΕΣ  
(COLUMBIA)

Spyrou Kyprianou Ave

Georgiou Griva Digeni

Αθηνών

Ελλάδος

Thessalonikis

Αγίας Ζωνής

Νικολάου Μιλόνα

Ομήρου

Αγίας Φιλάρεως

Ιεροῦ Λοχου

F131

A1

A1

A1

A1

A1

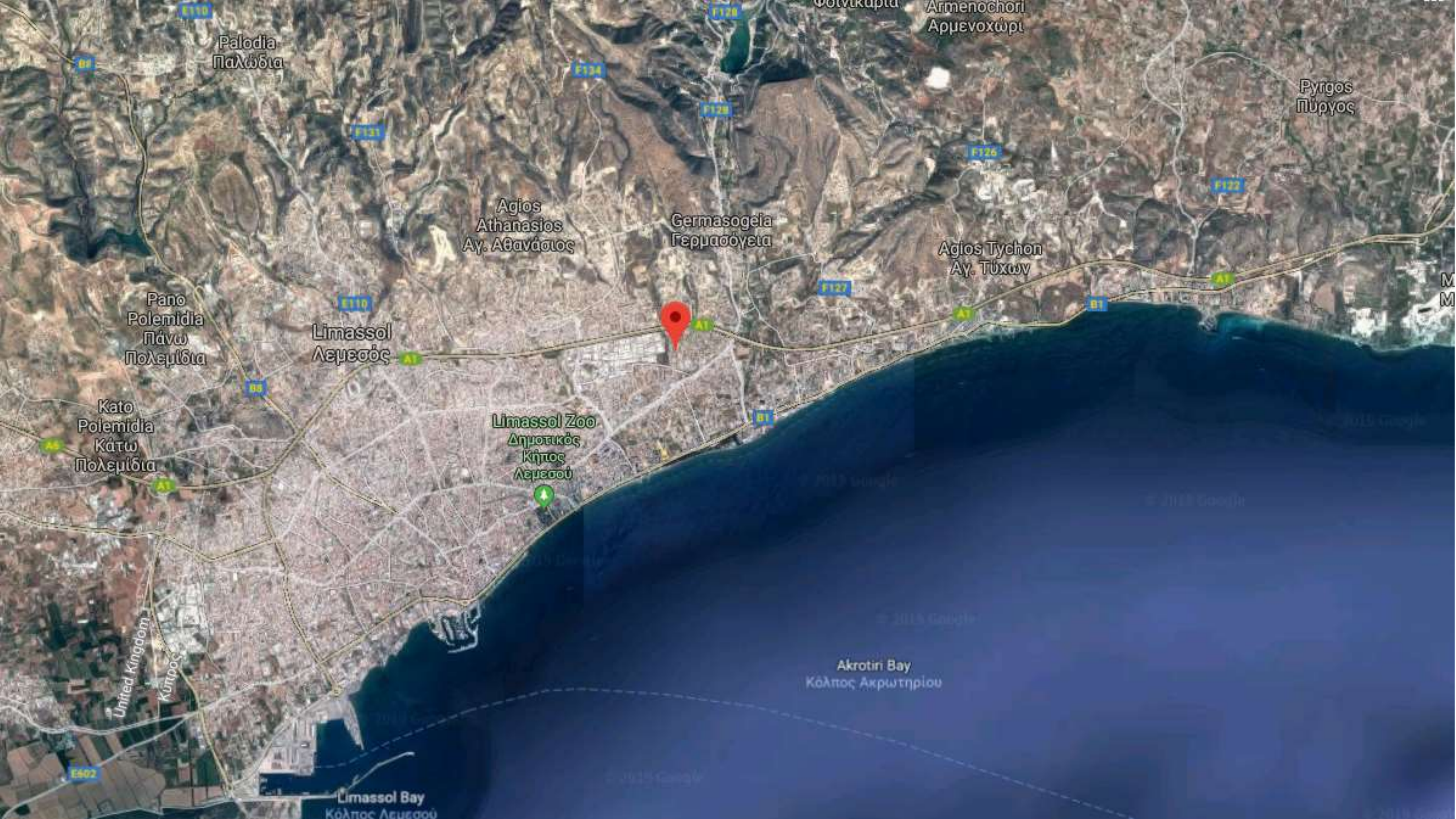
B1

B1

B1

F131







# A Five Star Location

Vida Suites is located minutes away from all Limassol's 5 star hotels.



**Four Seasons Hotel**



**Amathus Beach Hotel**



**Grand Resort**



**Amara Hotel**



**Parklane Resort**



# Amenities

AMENITIES NEAR VIDA SUITES



Bakery 1 km



Supermarket 700 m



Private English School 4.2 km



Private Hospital 4 km



Pharmacy 1.7 km



Petrol Station 1.2 km



Restaurant 1.7 km



Bank 850 m





## CAFES & BARS

Just 2.3 km away from a wide selection of chic cafes and beach bars.



## SANDY BEACHES

A selection of sandy beaches are within 5 km away.



## MARINA

Just 11 km away Saint Raphael Marina offers 237 berth marina with all amenities, accommodating boats up to 30m.





## Location

Exclusive area in Limassol, centrally located and moments away from the coastline and amenities.

## Area

A quiet residential neighborhood in the heart of the city.

## Design

Modern and elegant with expansive glass and open-plan living.

## About

Comprising 16 luxuriously appointed 2 and 3 bedroom apartments with large terraces for Mediterranean living.



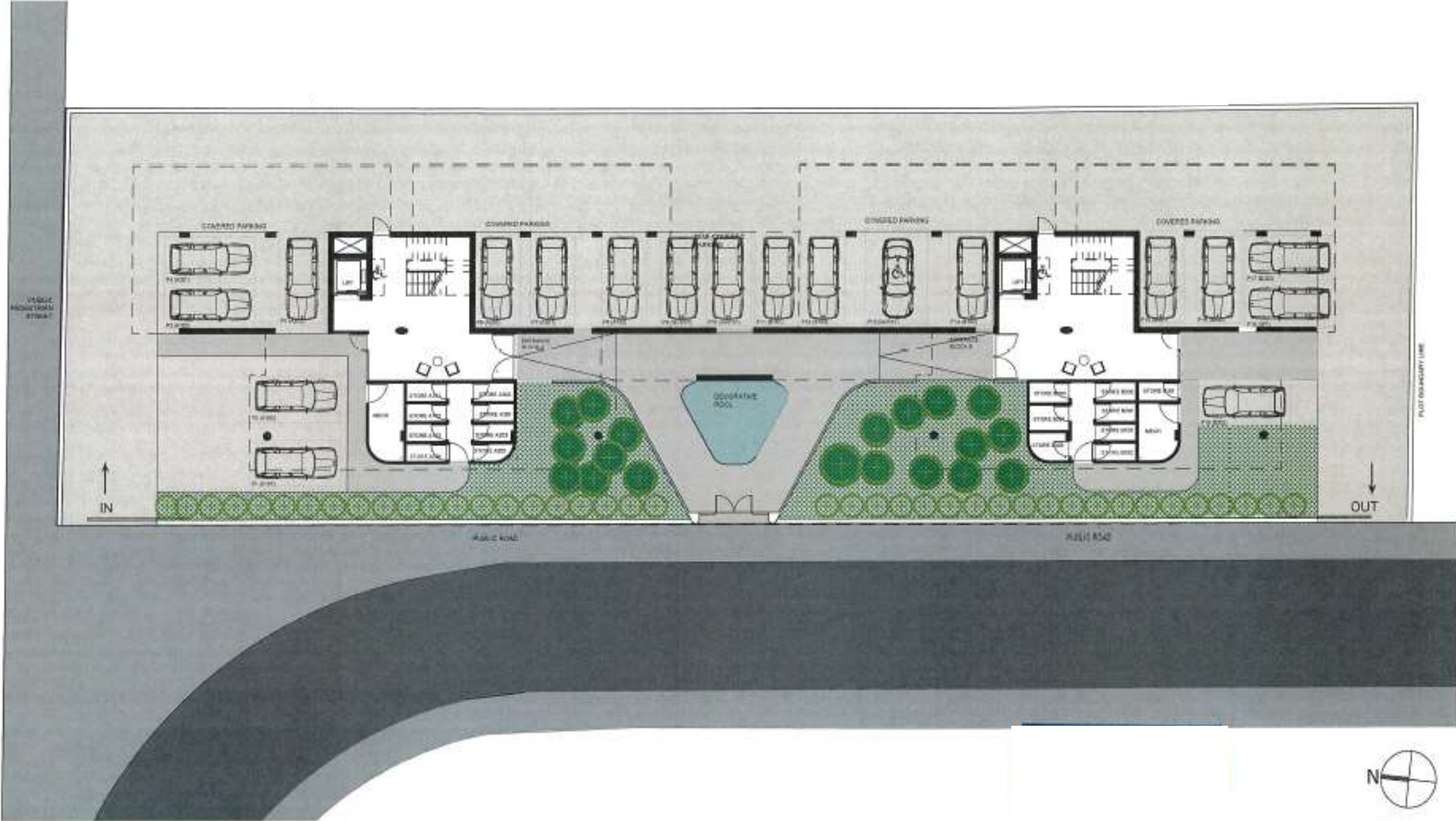


BLOCK A

BLOCK B



# SITE PLAN





# FIRST FLOOR PLANS – BLOCK A





# FIRST FLOOR PLANS – BLOCK B





# SECOND FLOOR PLANS – BLOCK A





# SECOND FLOOR PLANS – BLOCK B









# THIRD FLOOR PLANS – BLOCK A





# THIRD FLOOR PLANS – BLOCK B









# ROOF PLANS – BLOCK A





# ROOF PLANS – BLOCK B









Vida

S U I T E S